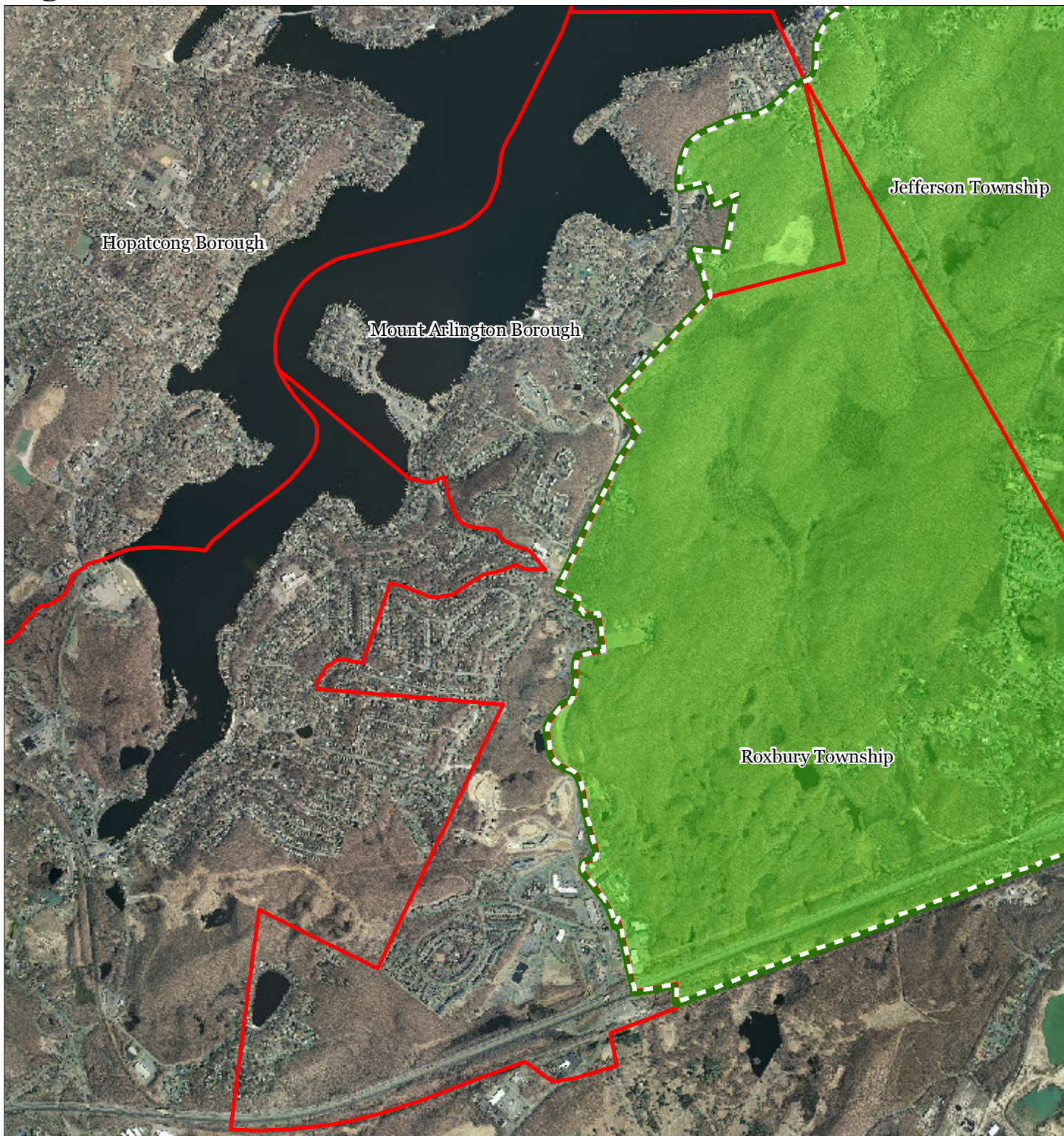


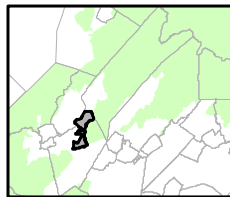
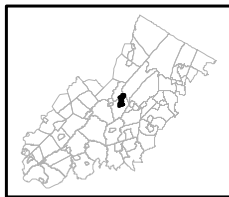


Figure 1: Preservation Area



-  Preservation Area
-  Municipal Boundaries

Mount Arlington Borough



1 inch = 0.416 miles



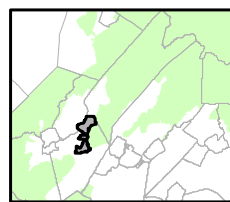
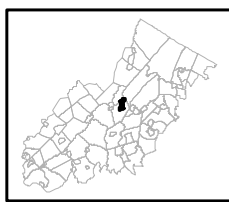
Figure 2: Land Use Capability Map Zones



Regional Master Plan Overlay Zone Designation

- | | |
|--|-----------------------------|
| Zone | |
| Protection | Lakes Greater Than 10 acres |
| Conservation | Preservation Area |
| Existing Community | Municipal Boundaries |
| Sub-Zone | |
| Existing Community Environmentally Constrained | |
| Conservation Environmentally Constrained | |
| Lake Community | |
| Wildlife Management | |

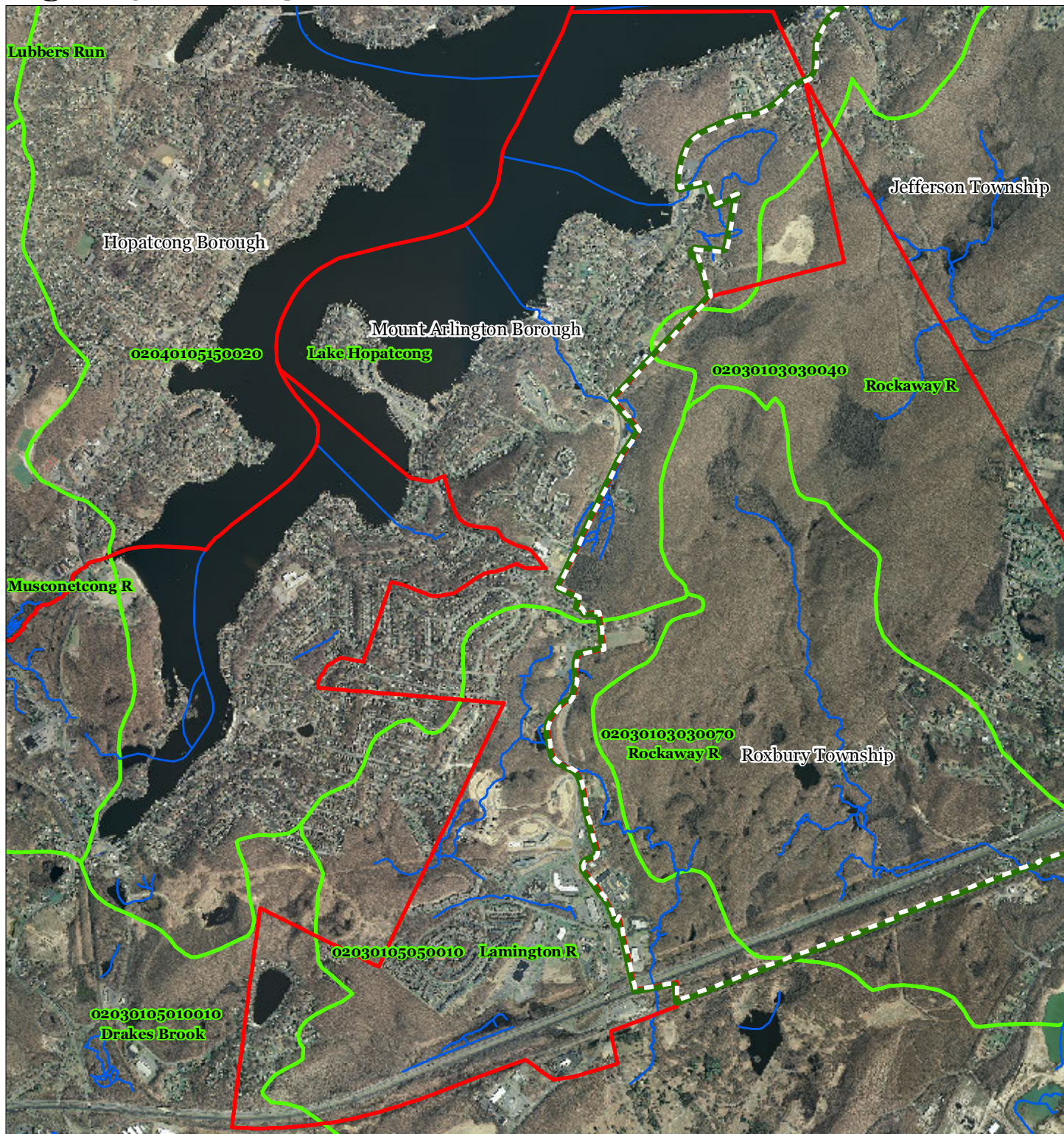
Mount Arlington Borough







1 inch = 0.416 miles

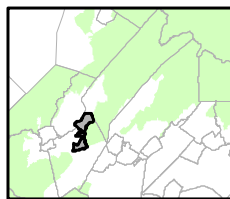


Figure 3: HUC 14 Boundaries



-  HUC 14 Subwatersheds
-  Stream Centerlines
-  Preservation Area
-  Municipal Boundaries

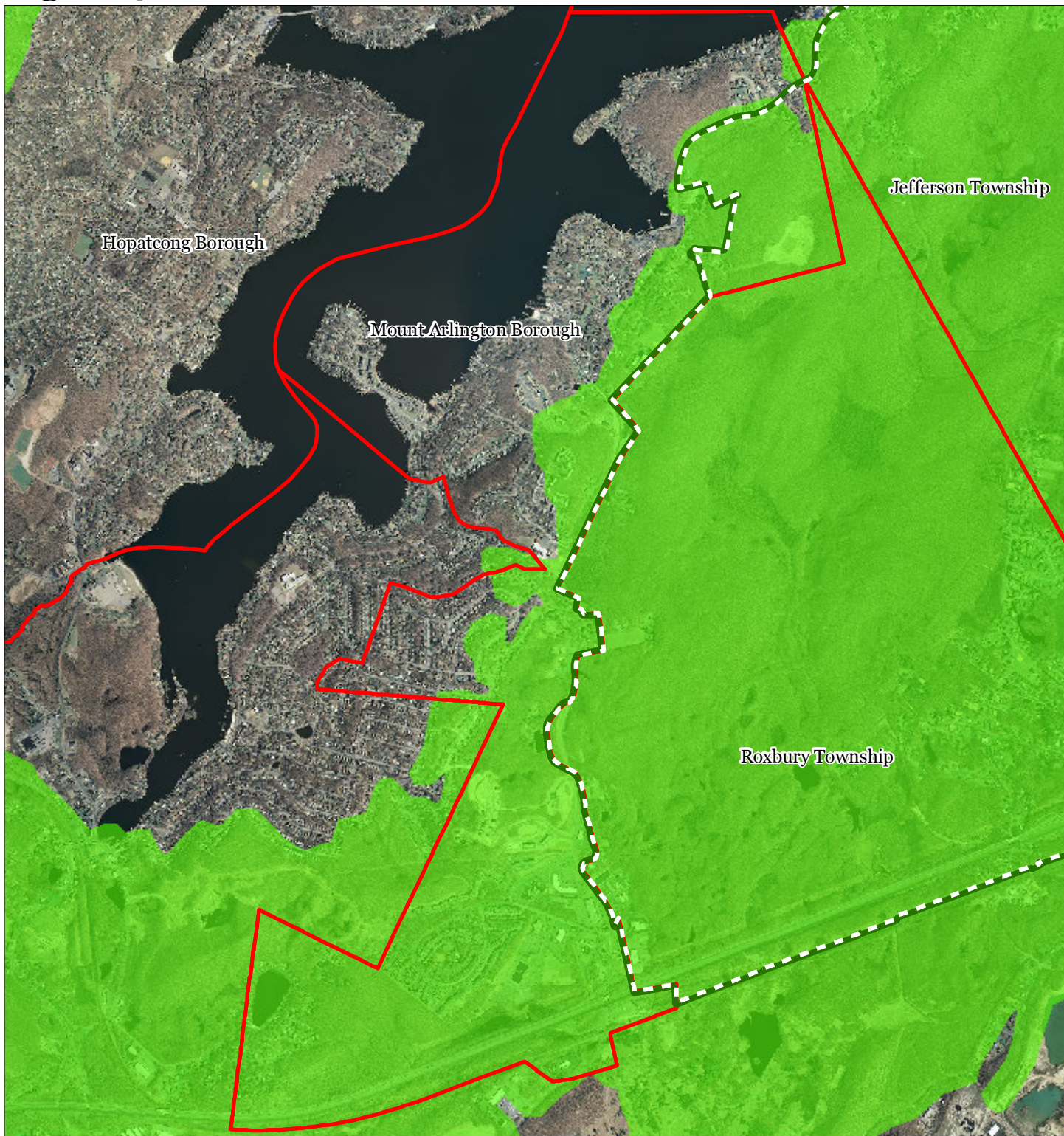
Mount Arlington Borough






1 inch = 0.416 miles

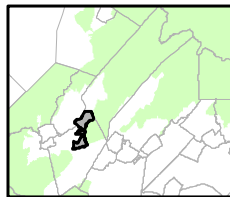
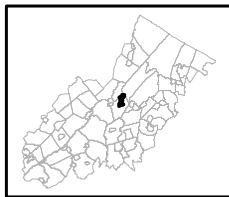


Figure 4: Forest Resource Area



-  Forest Resource Area
-  Preservation Area
-  Municipal Boundaries

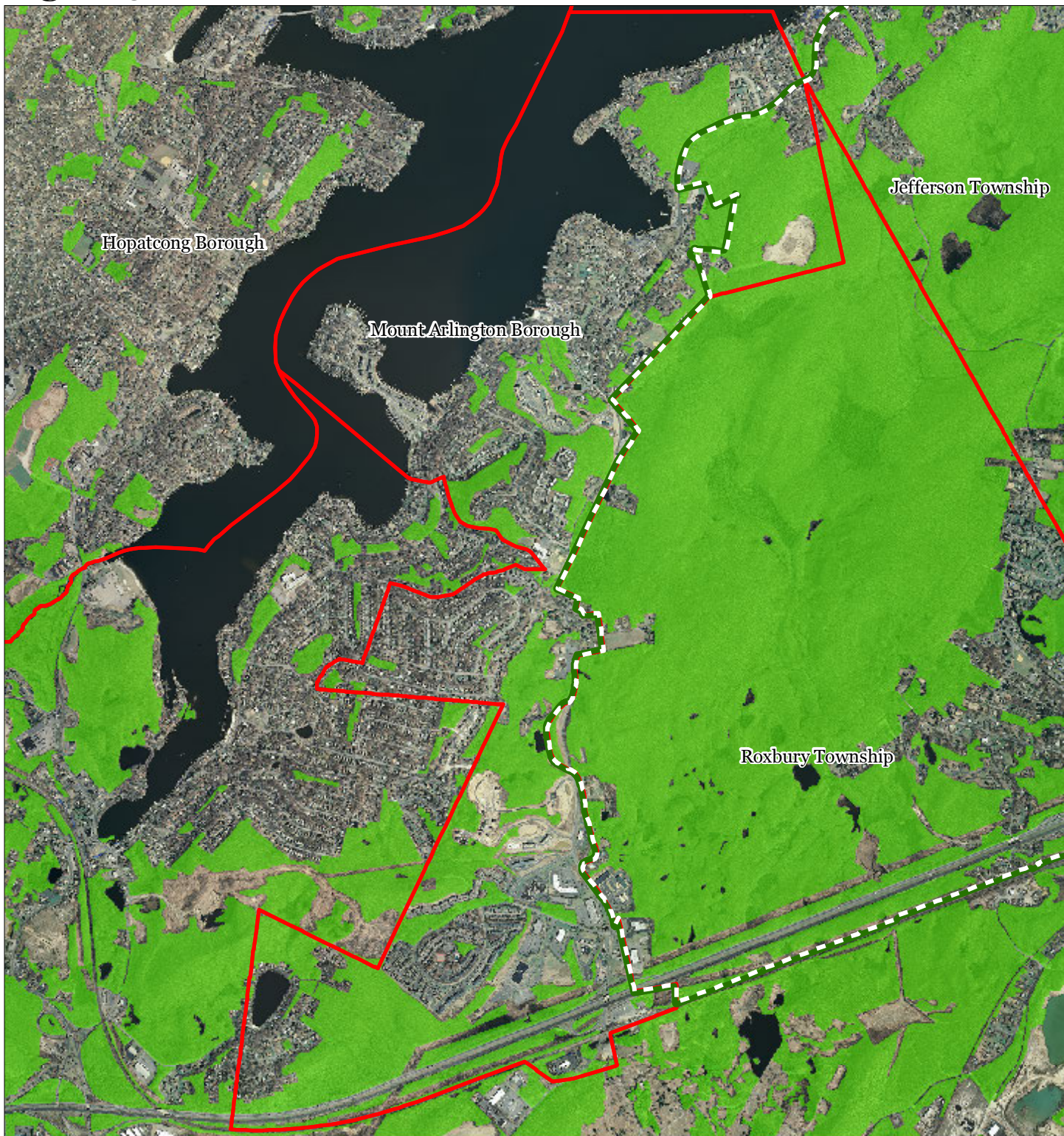
Mount Arlington Borough






1 inch = 0.416 miles

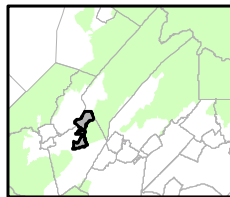


Figure 5: Total Forest Area



-  Forested Areas
-  Preservation Area
-  Municipal Boundaries

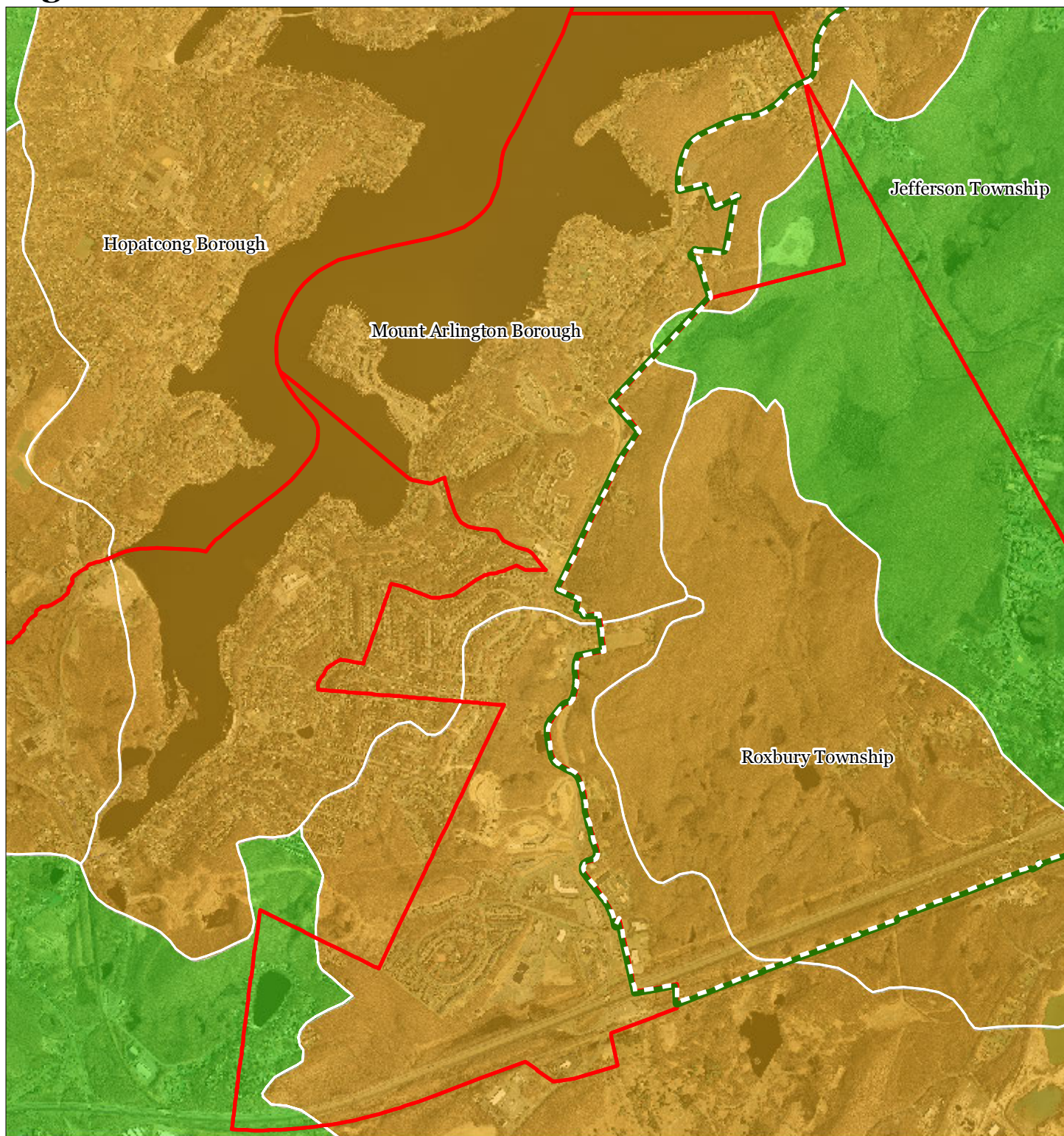
Mount Arlington Borough








1 inch = 0.416 miles



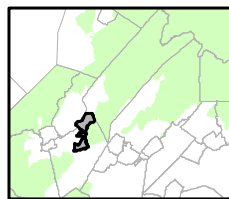
Figure 6: Forest Subwatersheds



Forest Integrity by HUC14 Subwatershed

-  *Low*
-  *Moderate*
-  *High*
-  Preservation Area
-  Municipal Boundaries

Mount Arlington Borough

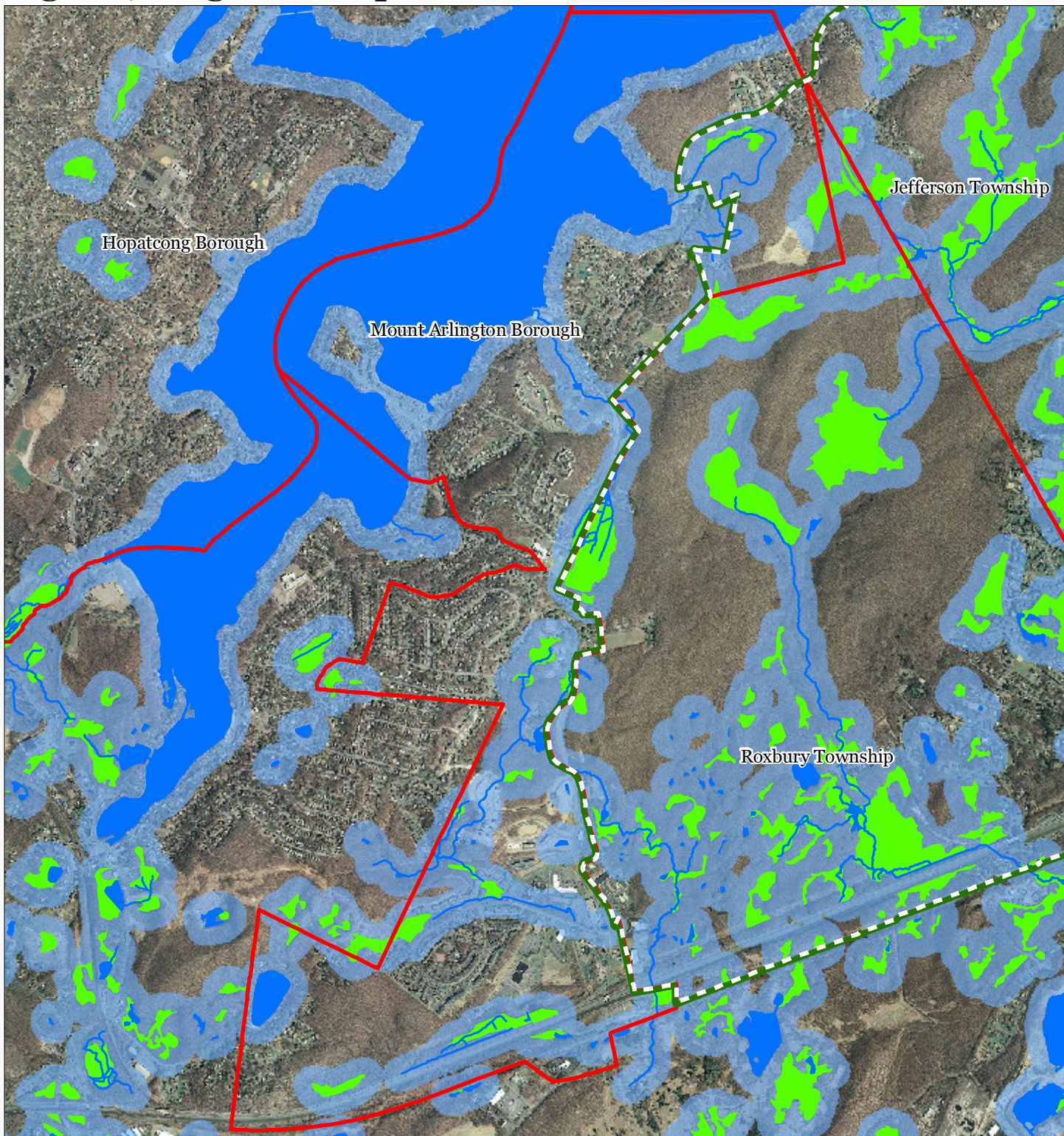


1 inch = 0.416 miles



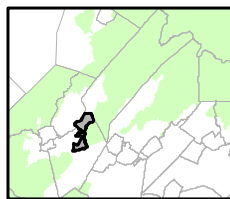
October 2011

Figure 7: Highlands Open Waters



-  Highlands Open Water Buffers (300ft)
-  Streams
-  Wetlands
-  Lakes & Ponds
-  Preservation Area
-  Municipal Boundaries

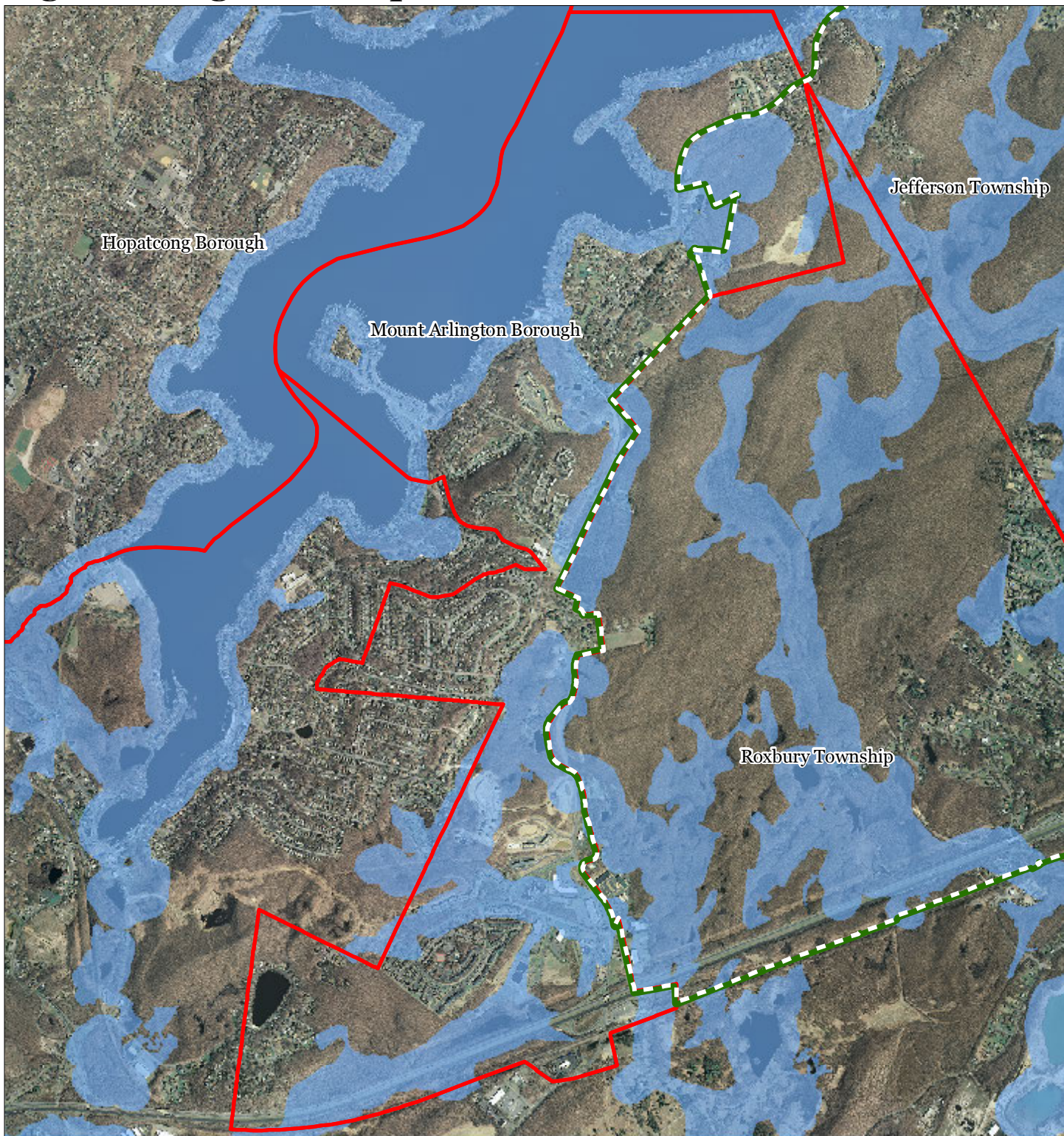
Mount Arlington Borough

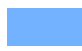




1 inch = 0.416 miles

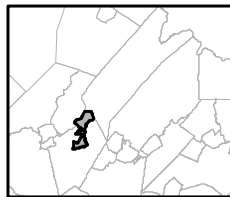


Figure 8: Highlands Riparian Areas



-  Riparian Area
-  Preservation Area
-  Municipal Boundaries

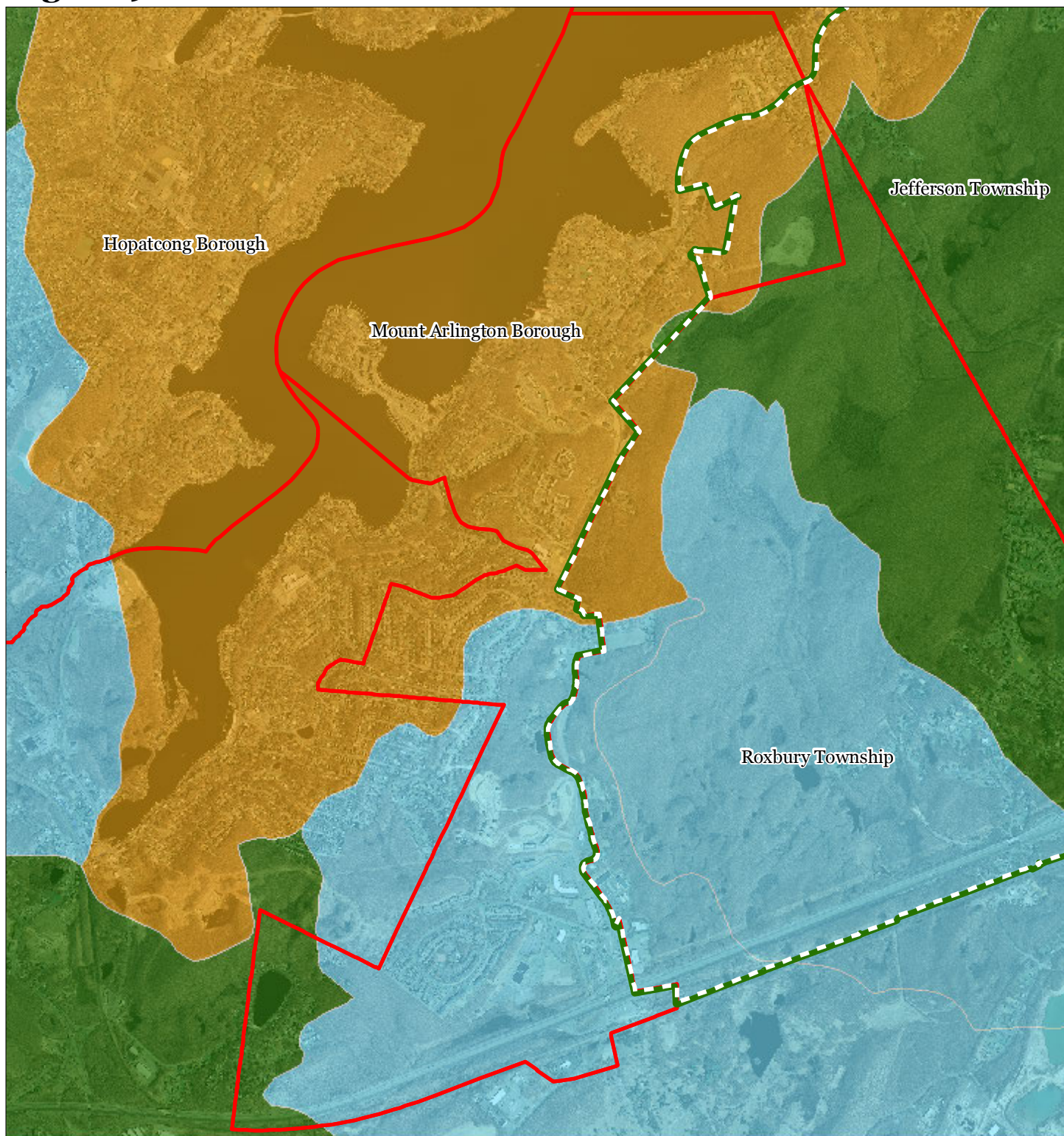
Mount Arlington Borough



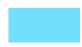




1 inch = 0.416 miles



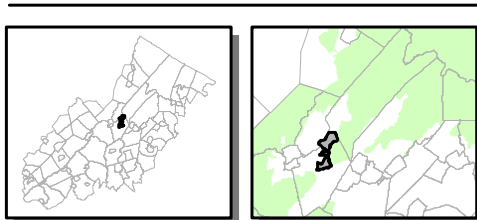
Figure 9: Watershed Values



Watershed Values by HUC14 Subwatershed

-  Low
-  Moderate
-  High
-  Preservation Area
-  Municipal Boundaries

Mount Arlington Borough

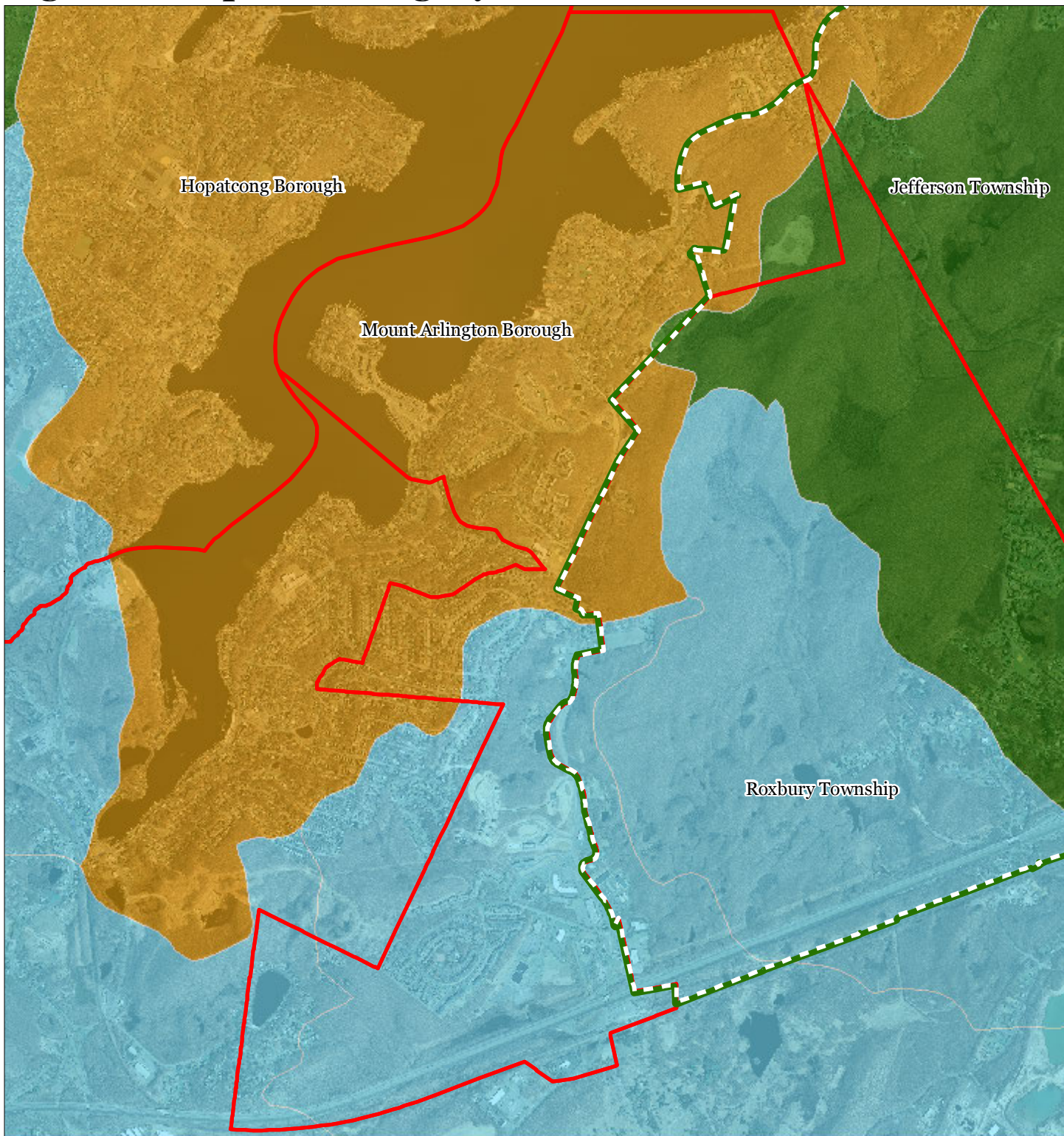


1 inch = 0.416 miles

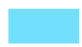






October 2011

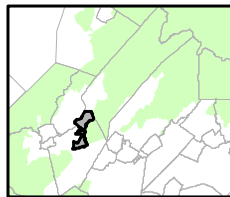
Figure 10: Riparian Integrity



Riparian Integrity by HUC14 Subwatershed

-  Low
-  Moderate
-  High
-  Preservation Area
-  Municipal Boundaries

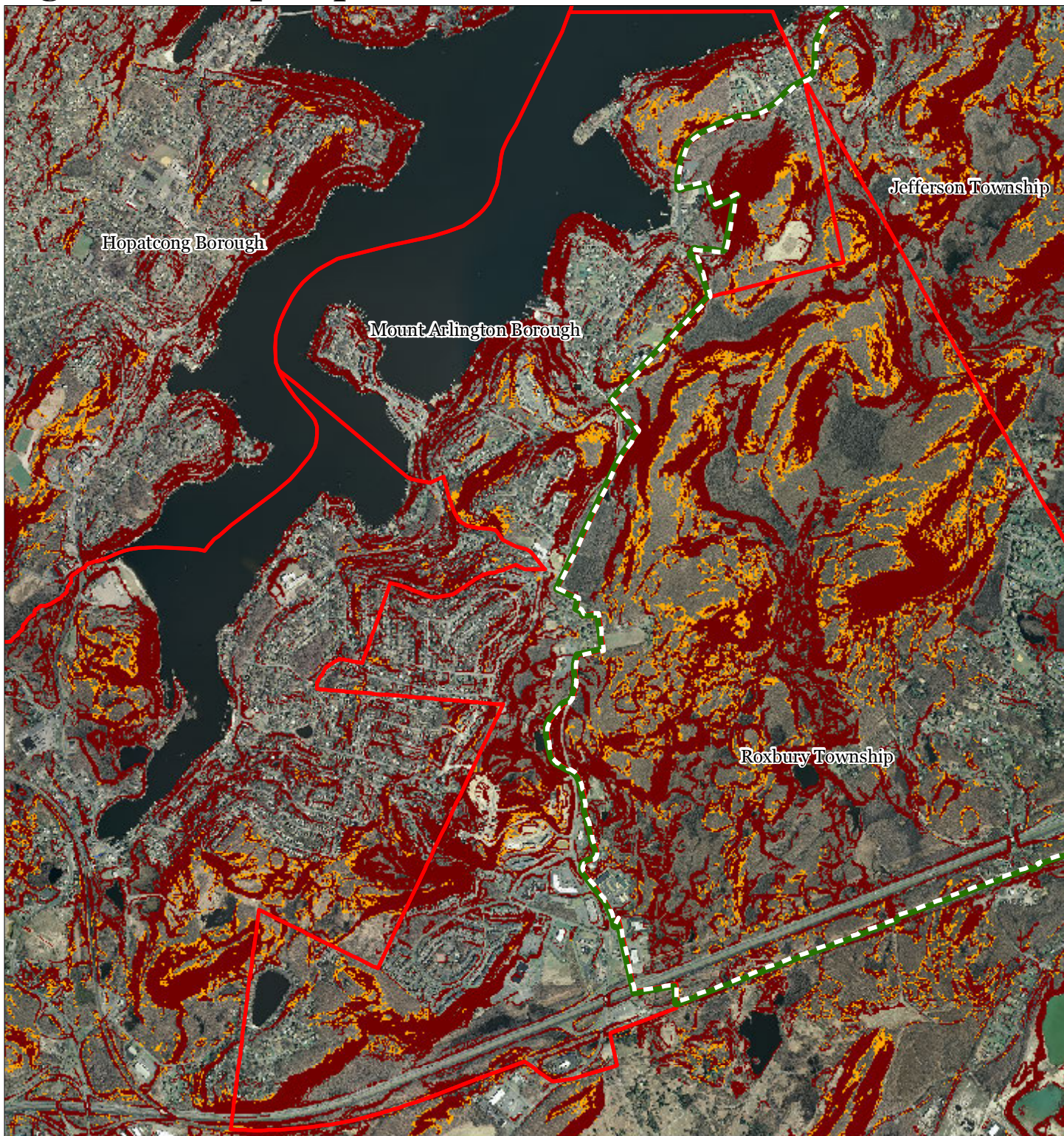
Mount Arlington Borough







1 inch = 0.416 miles



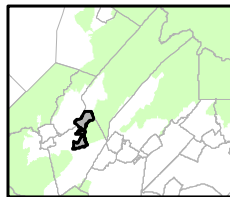
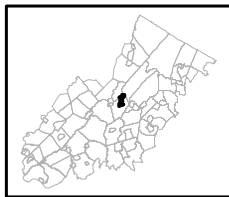
Figure 11: Steep Slopes Protection Areas



Steep Slopes

-  Moderate
-  Severe
-  Preservation Area
-  Municipal Boundaries

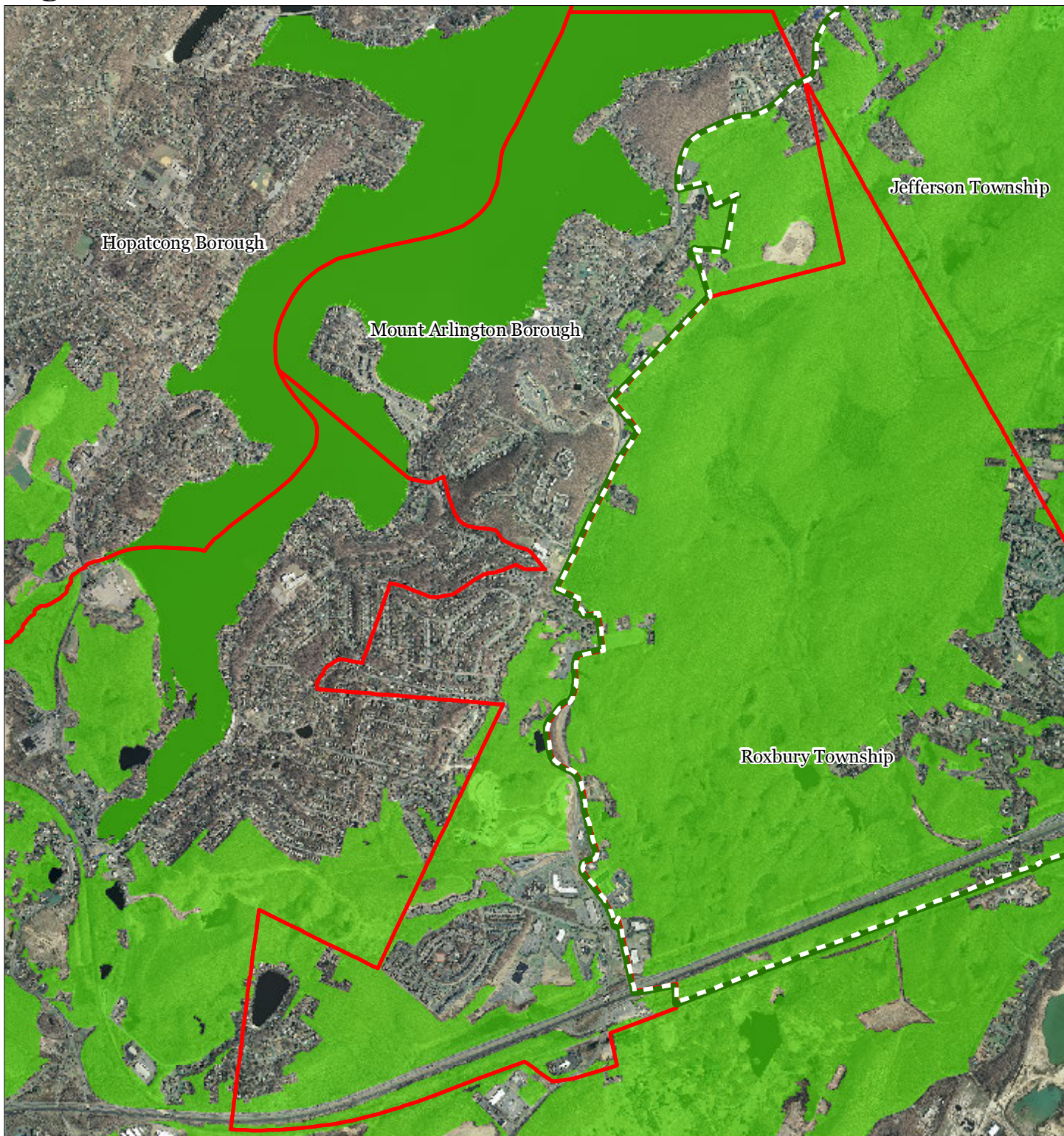
Mount Arlington Borough






1 inch = 0.416 miles

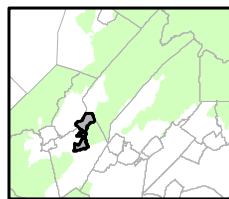


Figure 12: Critical Wildlife Habitat



-  Critical Wildlife Habitat
-  Preservation Area
-  Municipal Boundaries

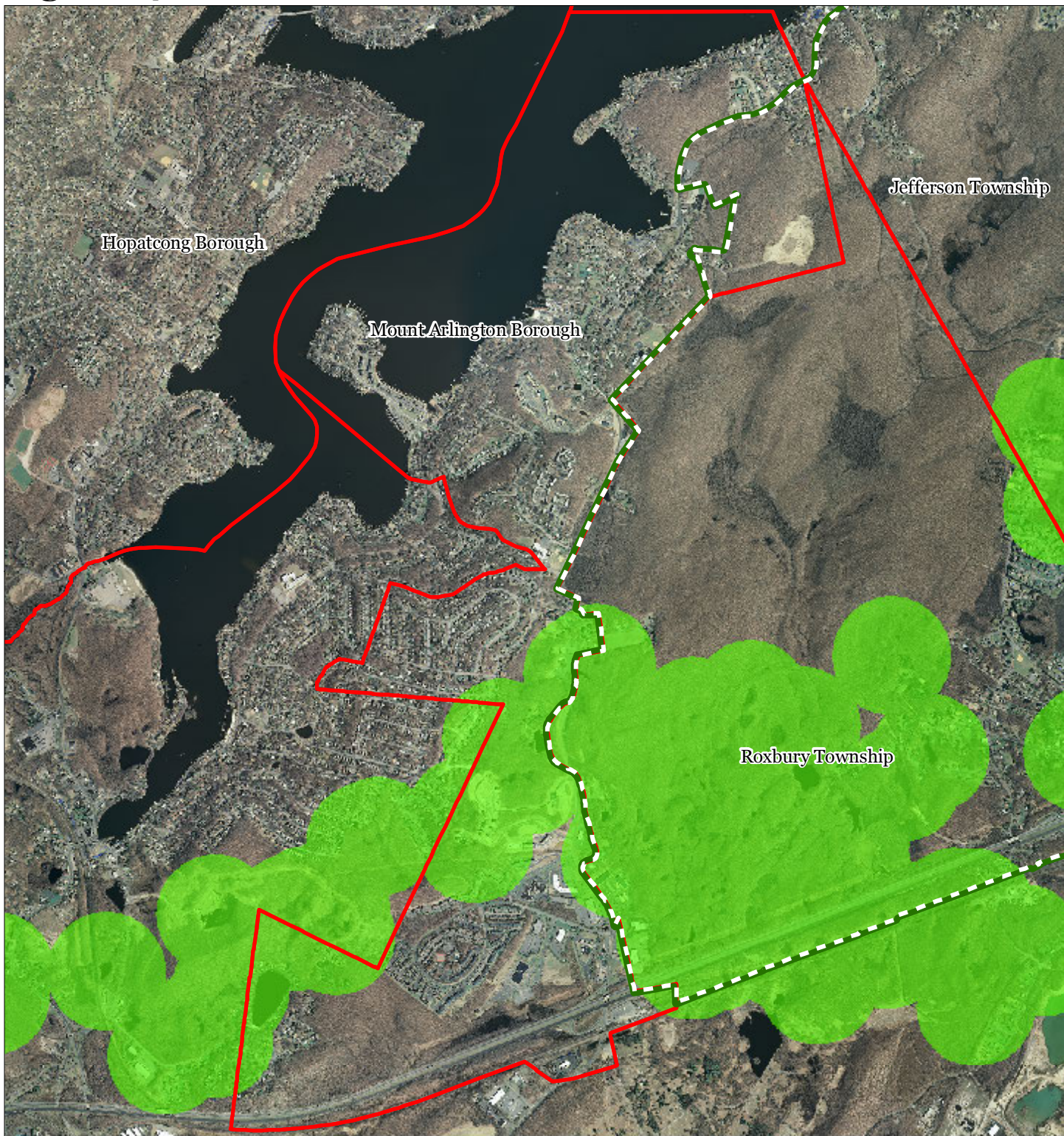
Mount Arlington Borough






1 inch = 0.416 miles

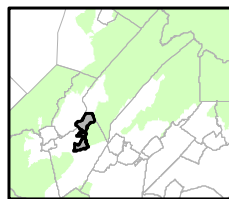
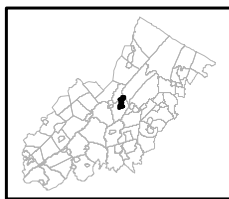


Figure 14: Vernal Pools



-  Vernal Pools + 1000ft Buffer
-  Preservation Area
-  Municipal Boundaries

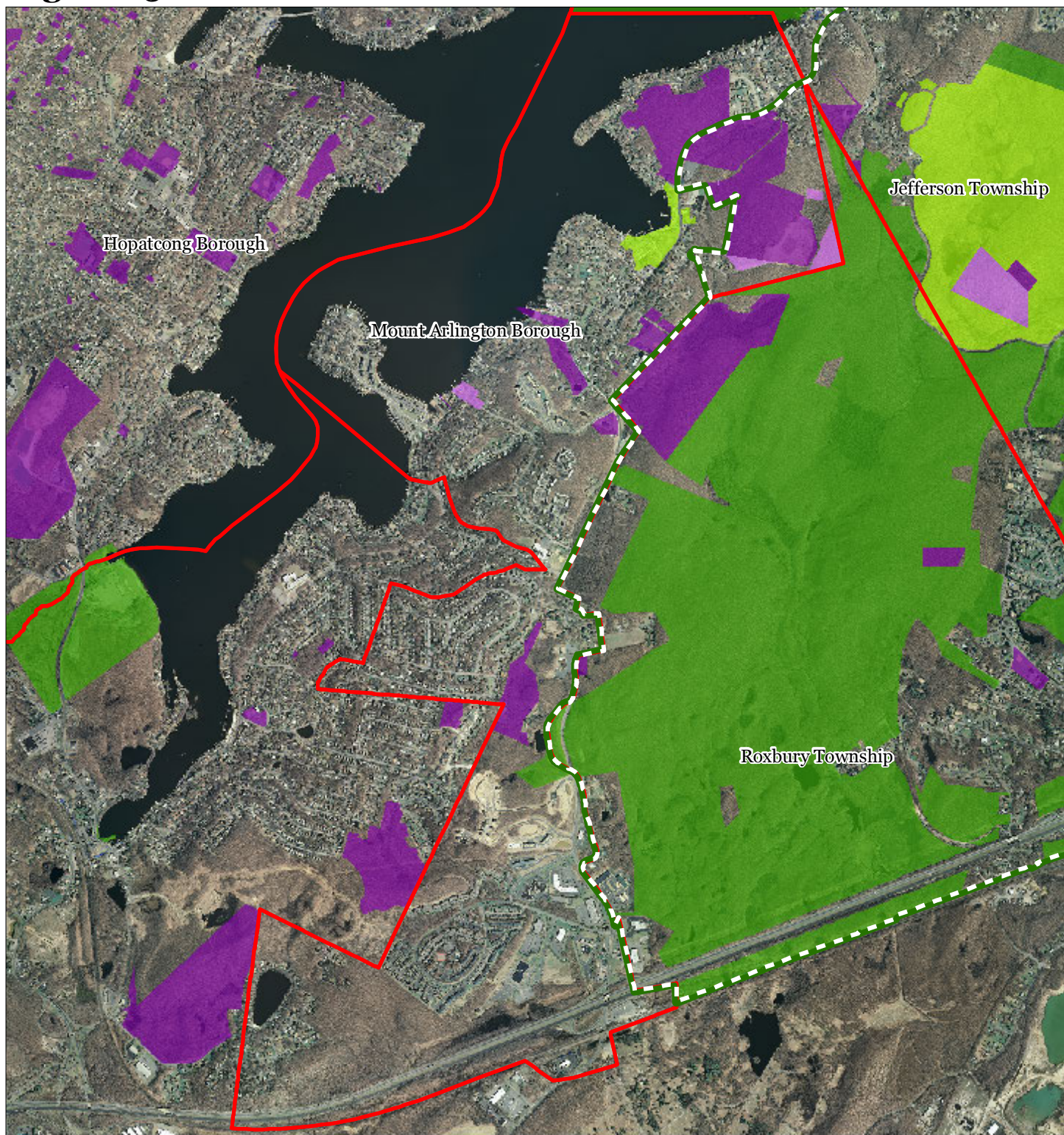
Mount Arlington Borough



1 inch = 0.416 miles



Figure 15: Preserved Lands



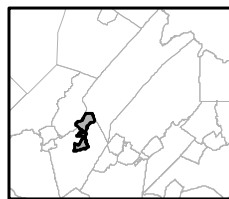
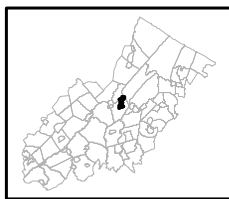
Preserved Lands

- Federal Open Space
- State Open Space
- County Open Space
- Municipal Open Space
- Non-Profit/Private Open Space
- Water Supply Watershed Lands
- Preserved Farmland
- Highlands Transfer of Development Lands

Conservation Easements

- Green Acres
- SADC Easements**
- SADC Final
- SADC Preserved
- Municipal Boundaries
- Preservation Area

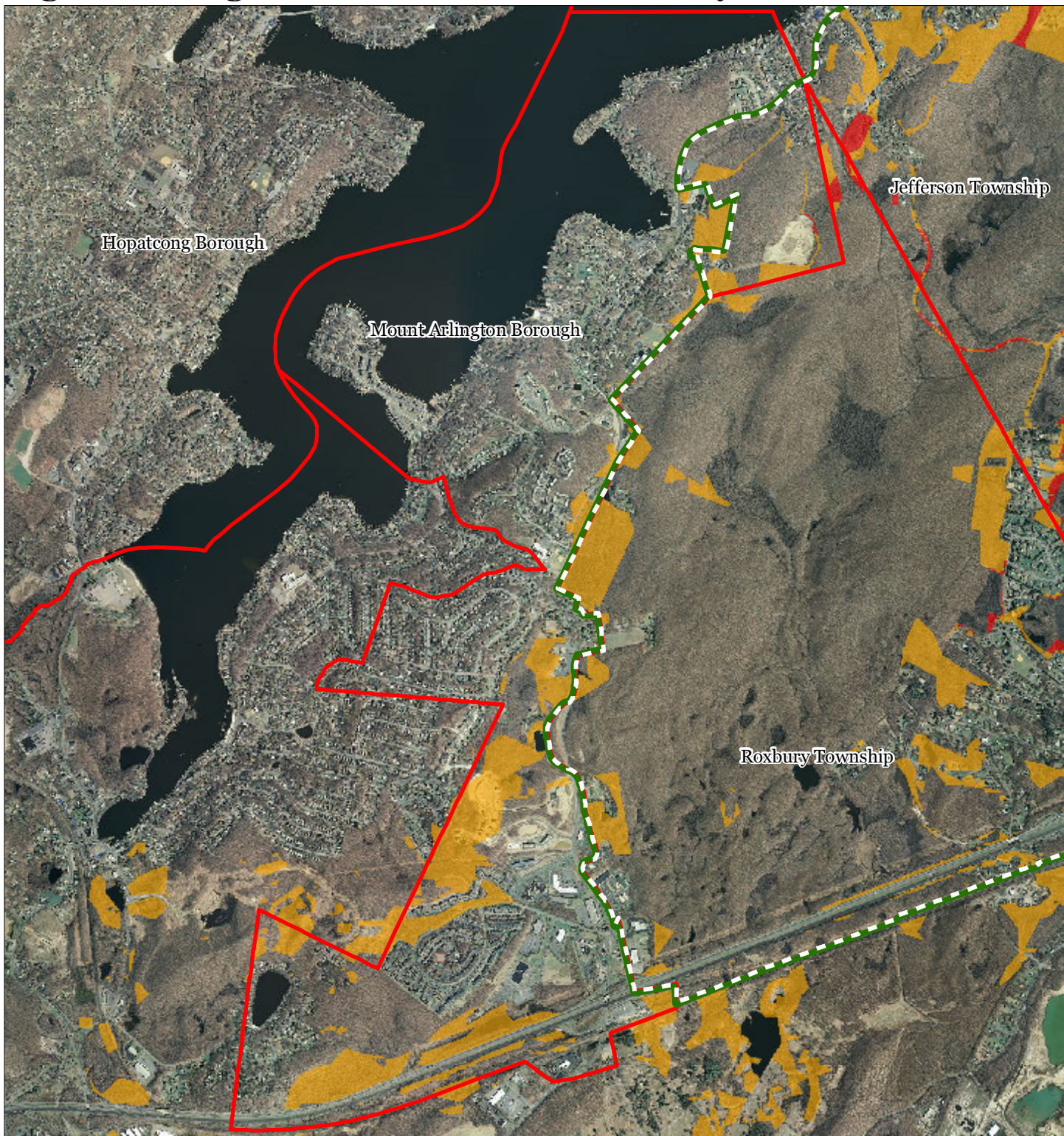
Mount Arlington Borough







1 inch = 0.416 miles



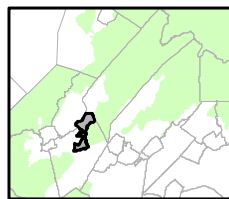
Figure 16: Highlands Conservation Priority Areas



Conservation Priority Area

-  Moderate
-  High
-  Preservation Area
-  Municipal Boundaries

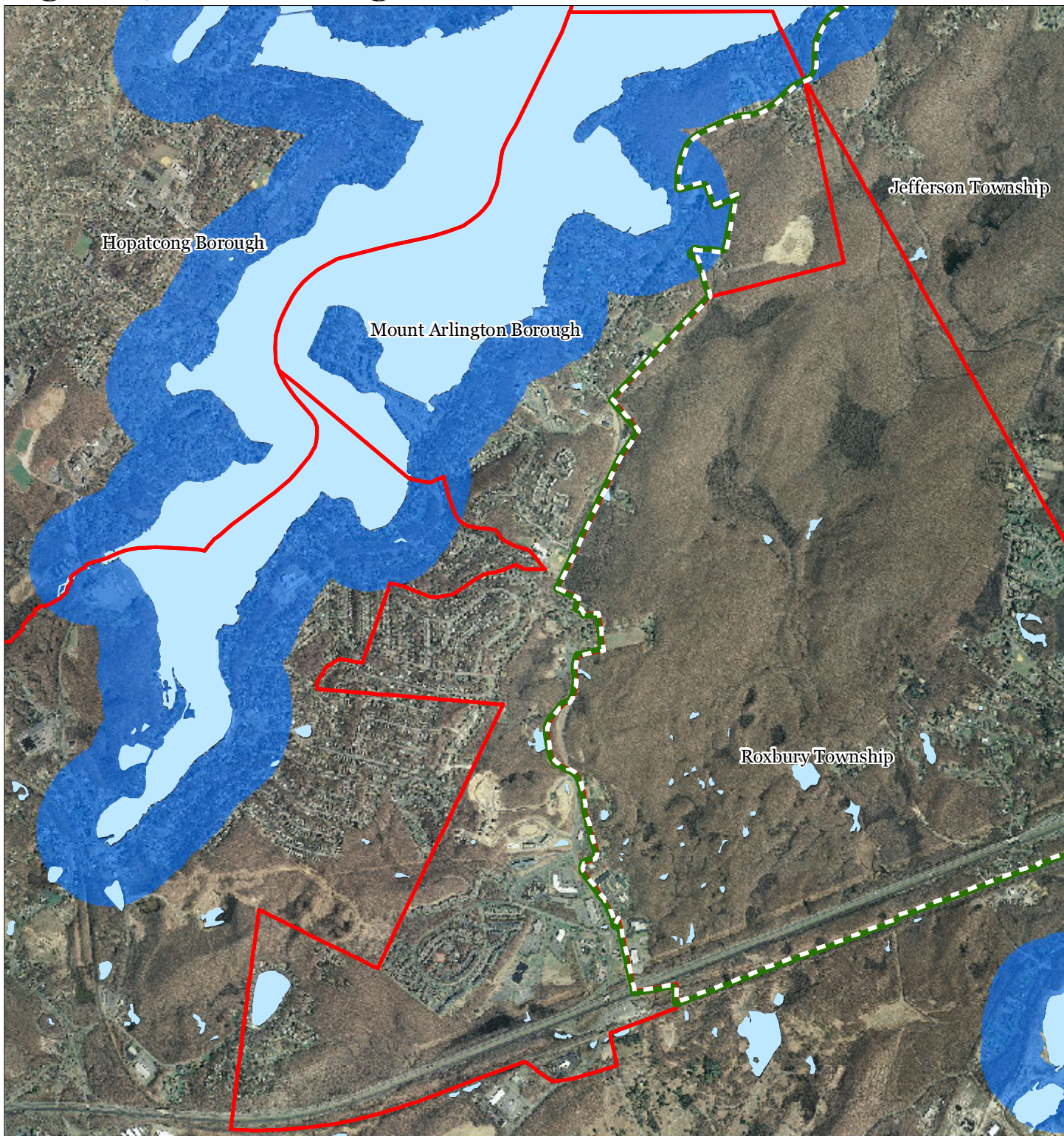
Mount Arlington Borough



1 inch = 0.416 miles

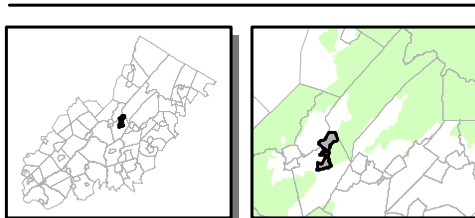


Figure 19: Lake Management Areas



- Lakes & Ponds
- Lake Management Areas
- Preservation Area
- Municipal Boundaries

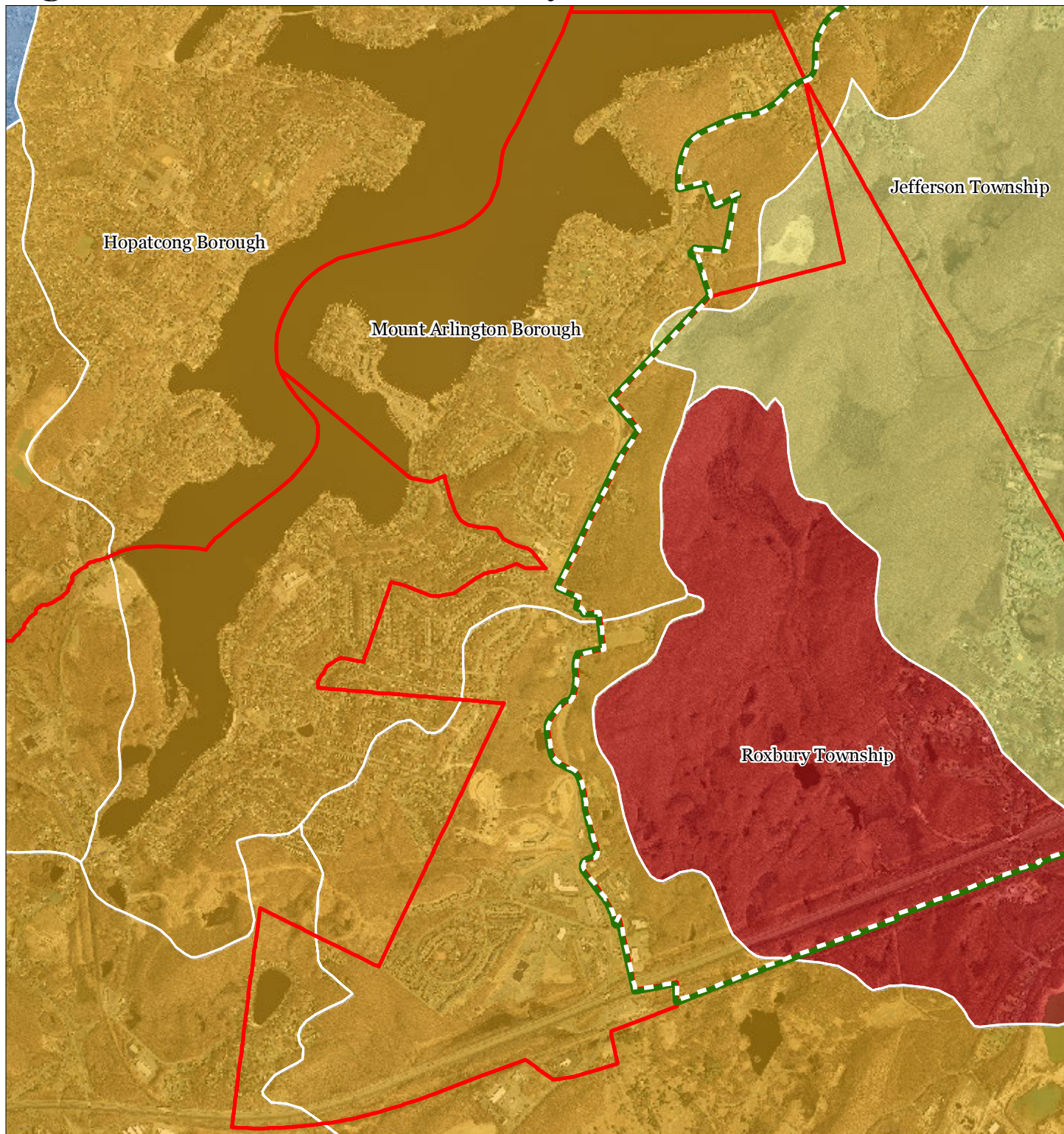
Mount Arlington Borough



1 inch = 0.416 miles



Figure 20: Net Water Availability



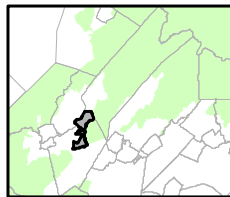
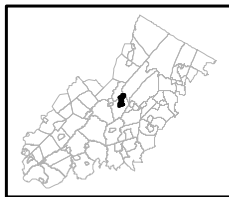
Net Water Availability By HUC14

Million Gallons Per Day (MGD)

- 0.10 - 0.39
- 0.05 - 0.09
- 0.00 - 0.04
- 0.09 - 0.00
- 0.99 - -0.10
- 7.10 - -1.00

- Preservation Area
- Municipal Boundaries

Mount Arlington Borough

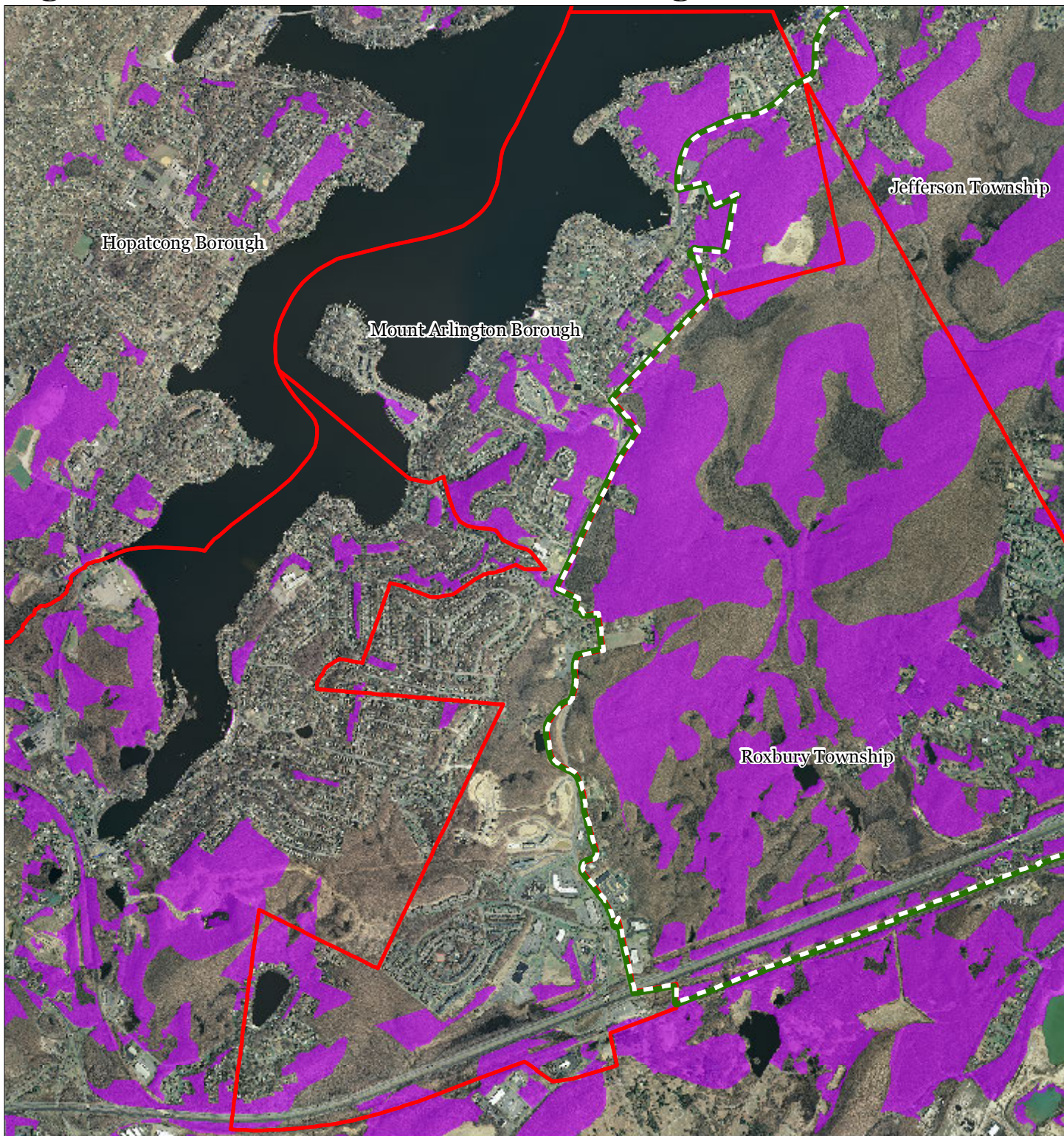





1 inch = 0.416 miles



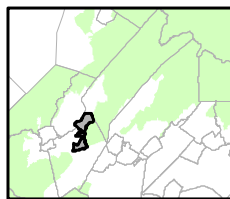
October 2011

Figure 21: Prime Ground Water Recharge Areas



-  Prime Groundwater Recharge Areas
-  Preservation Area
-  Municipal Boundaries

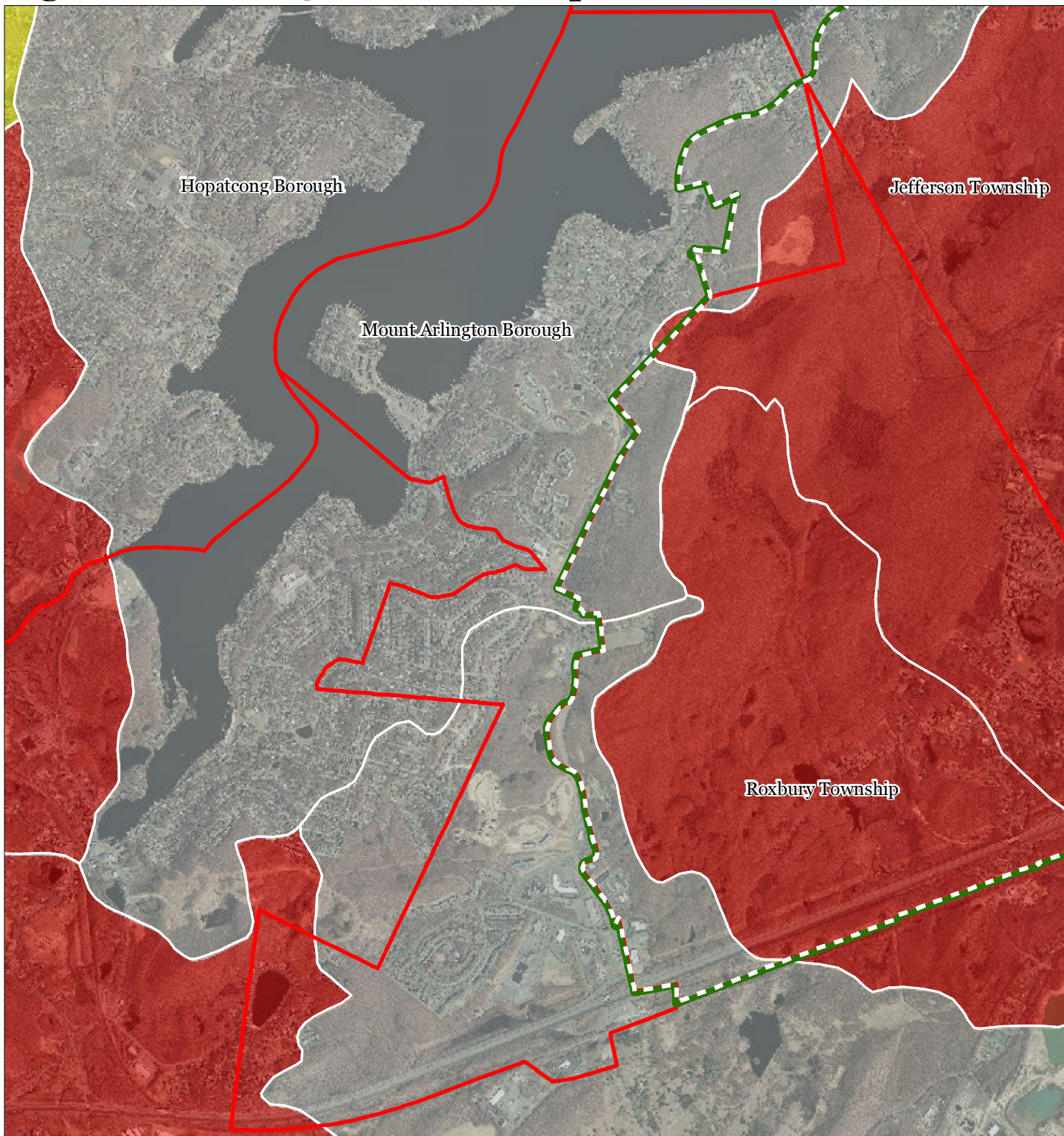
Mount Arlington Borough









1 inch = 0.416 miles



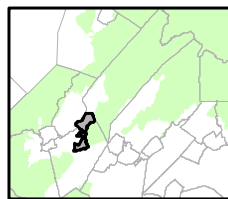
Figure 22: HUC 14s on NJDEP Impaired Waters List



Impaired Waters Overall Assessment by HUC14 Subwatershed

-  Non Impacted
-  Insufficient Data Available
-  Moderate
-  Water Quality Impaired
-  Preservation Area
-  Municipal Boundaries

Mount Arlington Borough



1 inch = 0.416 miles



October 2011

Figure 23: Wellhead Protection Areas



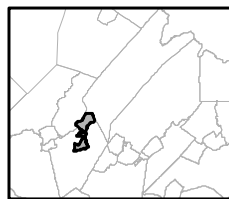
- Public Community Wells
- Public Non-Community Wells

Wellhead Protection Areas

- 2-Year Tier
- 5-Year Tier
- 12-Year Tier

- Preservation Area
- Municipal Boundaries

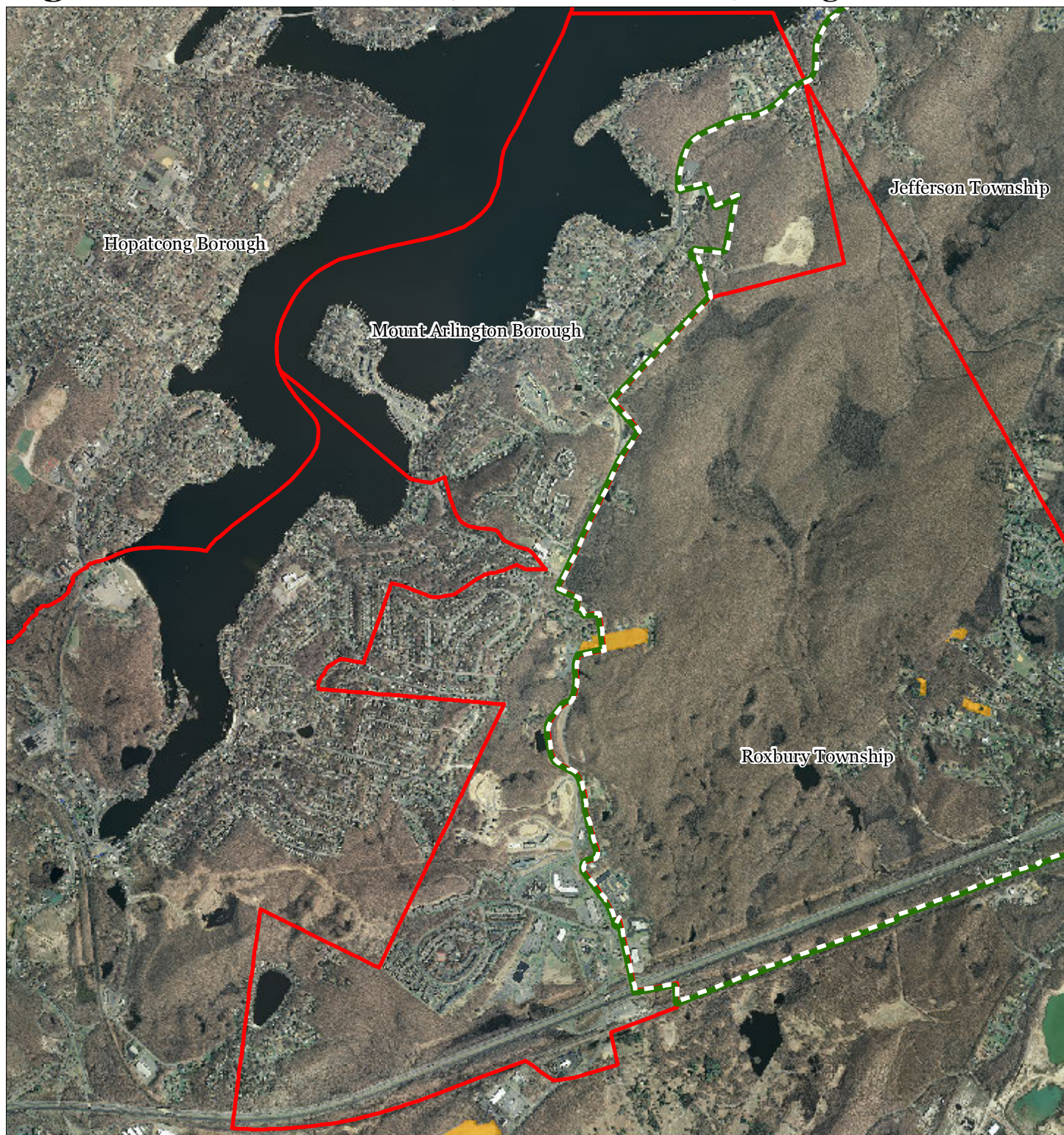
Mount Arlington Borough



1 inch = 0.415 miles



Figure 26: Preserved Farms, SADC Easements, All Agricultural Uses



SADC Easements



SADC Final



Preservation Area



SADC Preserved



Municipal Boundaries

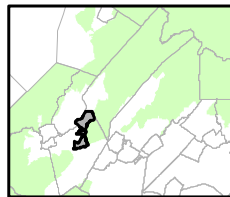
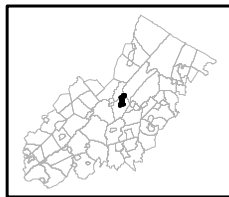


Preserved Farmland



Agriculture Uses

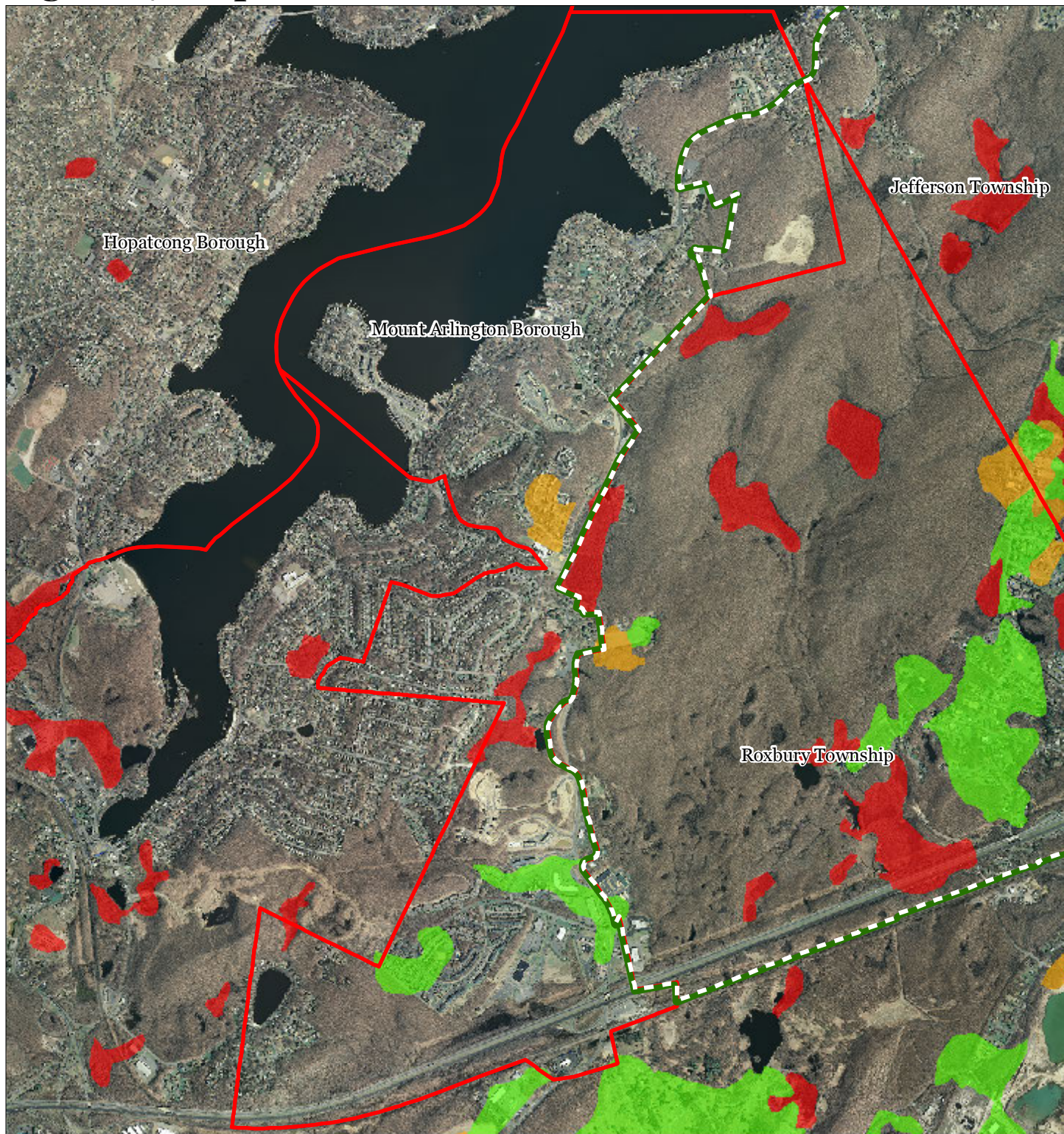
Mount Arlington Borough



1 inch = 0.416 miles



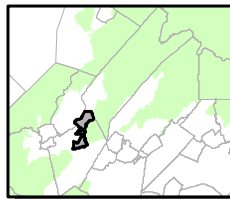
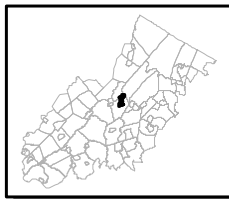
Figure 27: Important Farmland Soils



Important Farmland Soils

-  Prime Farmland
-  Farmland of Local Importance
-  Farmland of Statewide Importance
-  Farmland of Unique Importance
-  Preservation Area
-  Municipal Boundaries

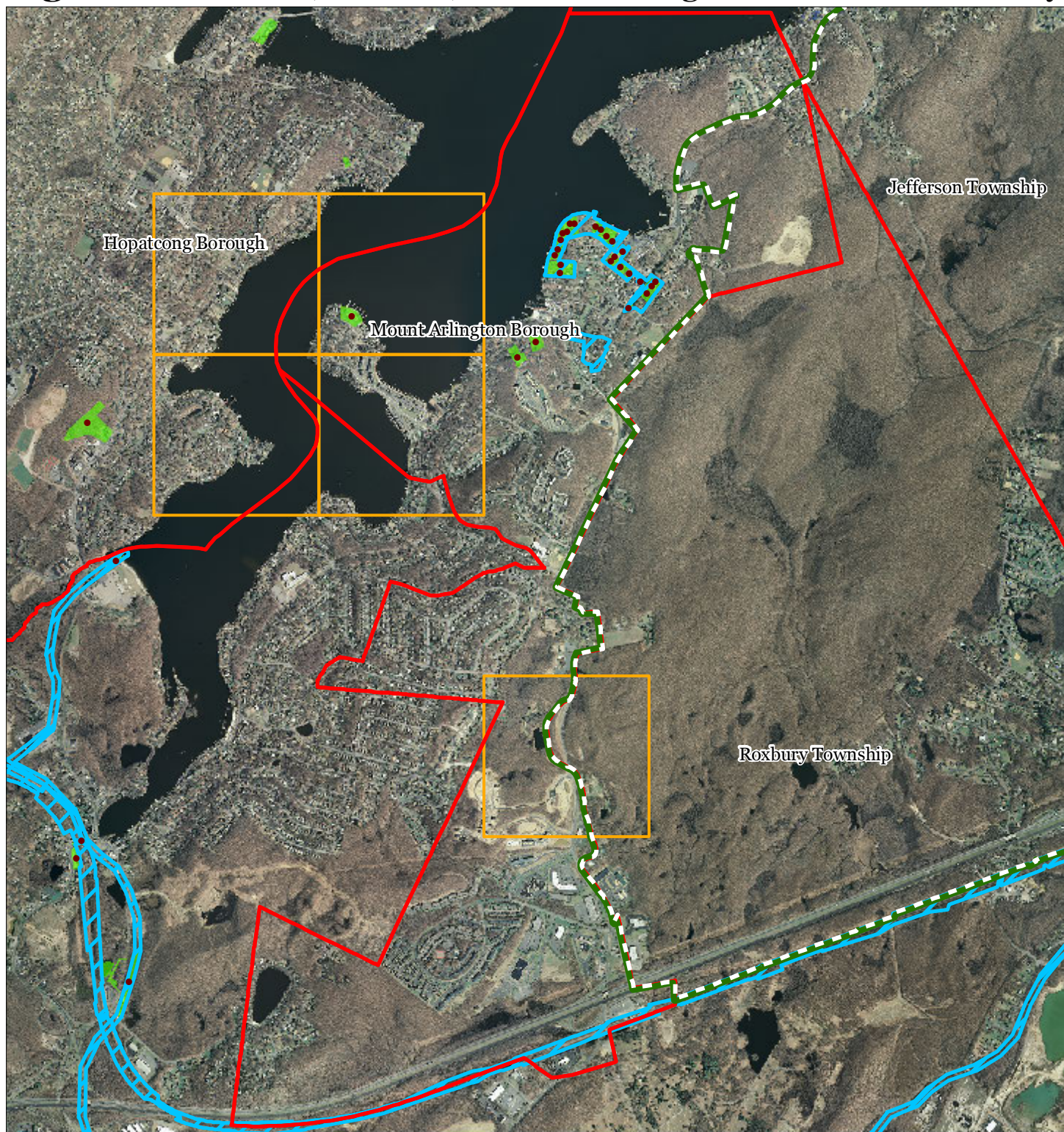
Mount Arlington Borough



1 inch = 0.416 miles



Figure 28: Historic, Cultural, and Archaeological Resources Inventory



-  Preservation Area
-  Municipal Boundaries
-  Archaeological Grids (1 sqmi)
-  NJ Historic Districts
-  Historic Property Points
-  Historic Property Polygons

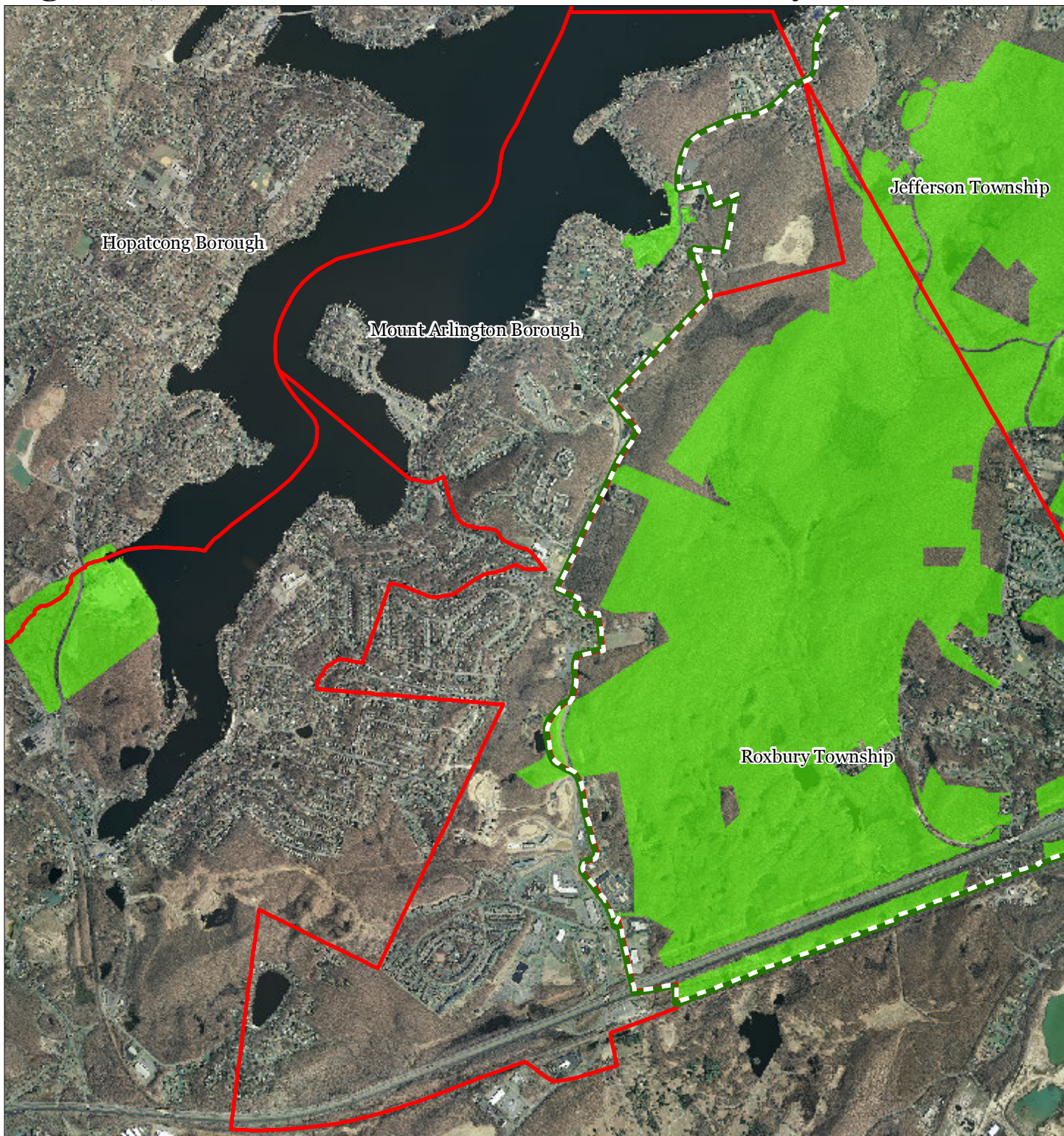
Mount Arlington Borough






1 inch = 0.416 miles

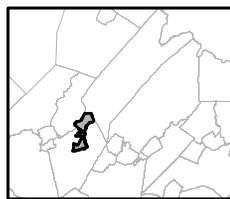
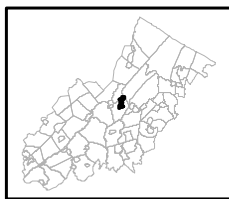


Figure 29: Baseline Scenic Resources Inventory



-  Scenic Resources
-  Municipal Boundaries
-  Preservation Area

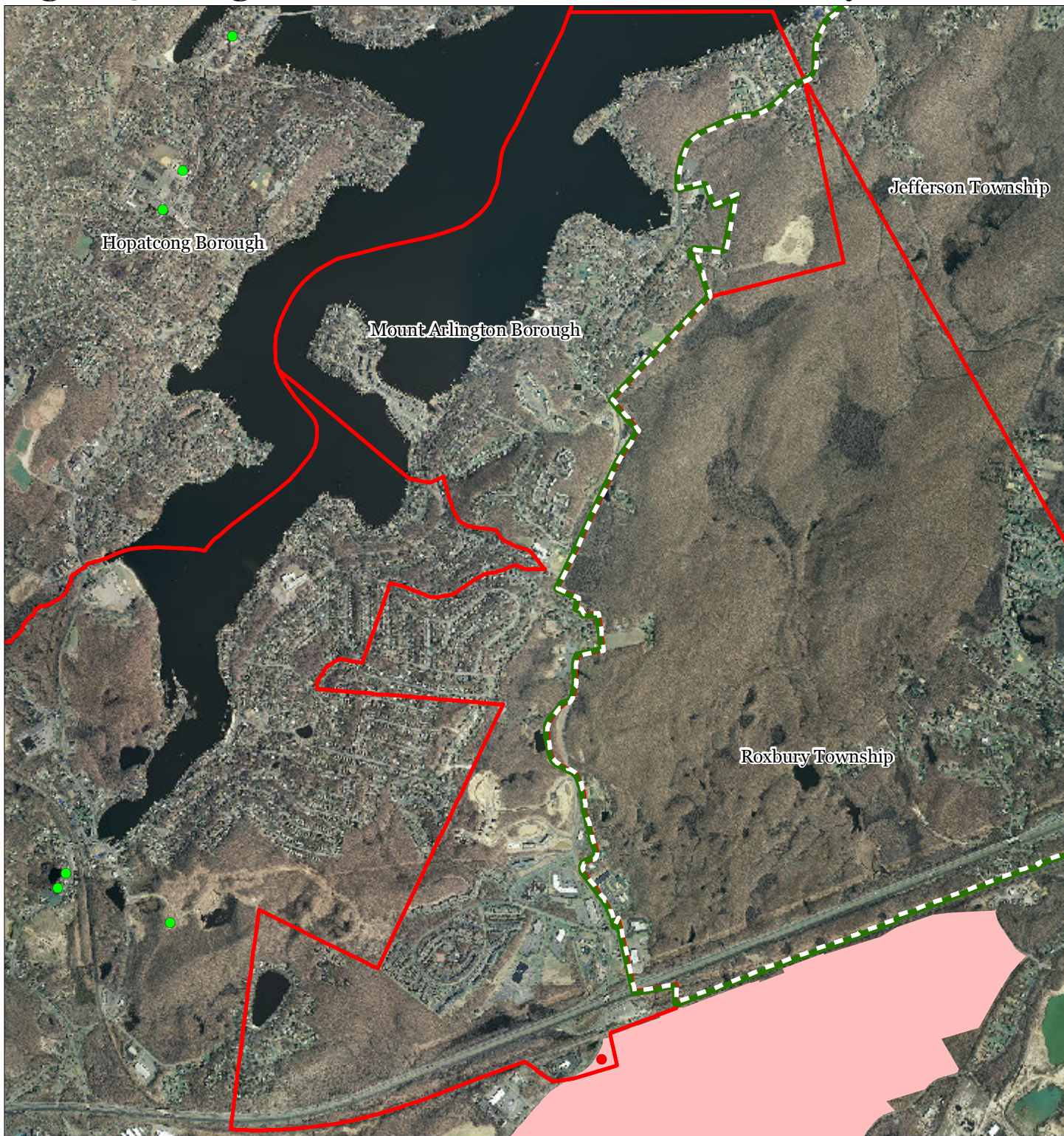
Mount Arlington Borough



1 inch = 0.415 miles



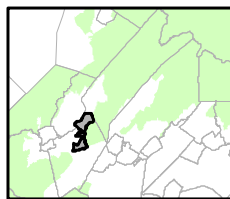
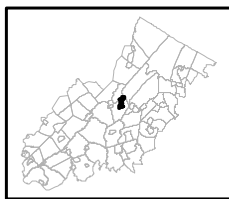
Figure 30: Highlands Contaminated Site Inventory



Highlands Contaminated Site Inventory

Mount Arlington Borough

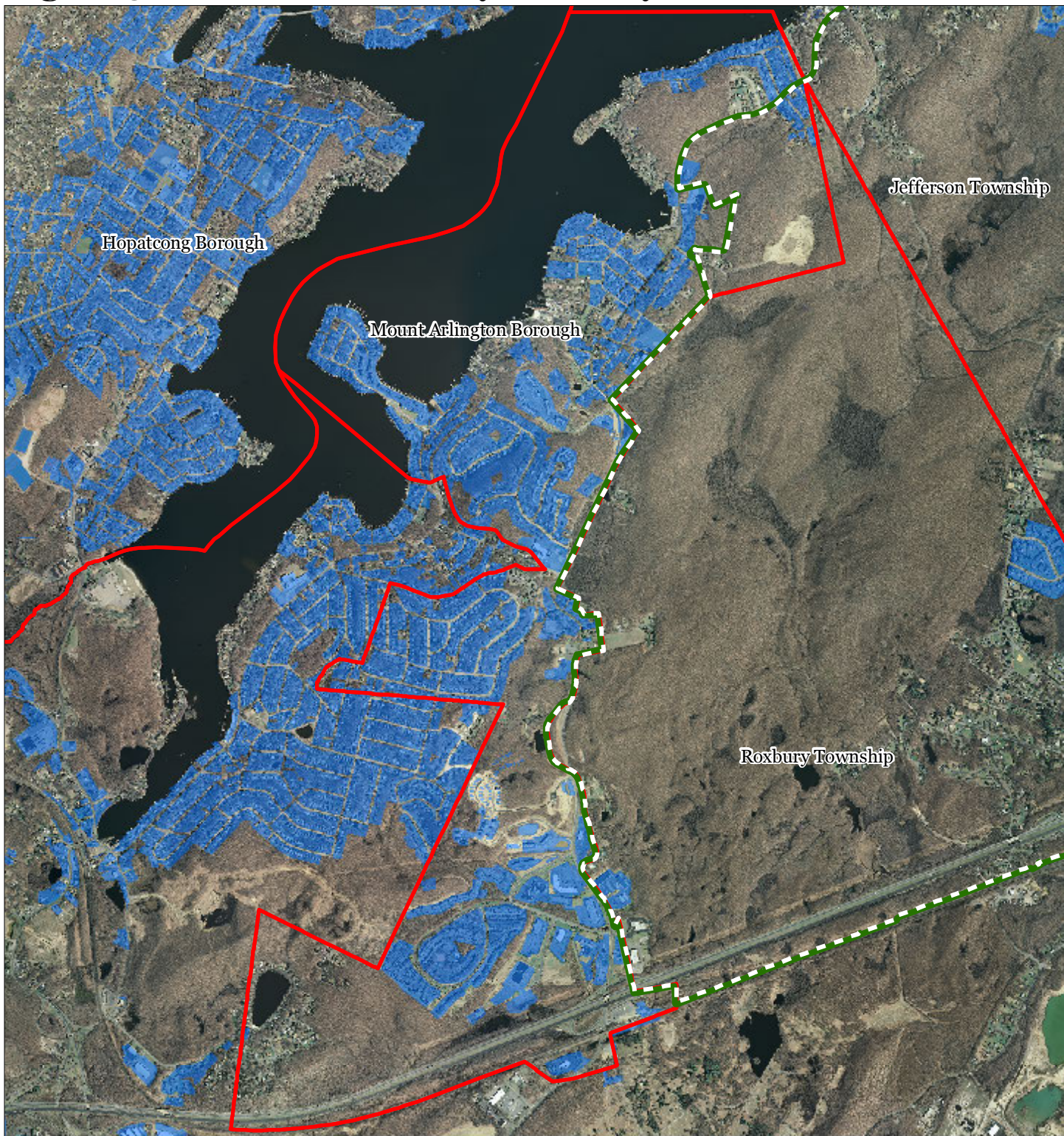
- Tier 1 Sites
- Tier 1 Sites (Polygons)
- Tier 2 Sites
- Preservation Area
- Municipal Boundaries






1 inch = 0.416 miles

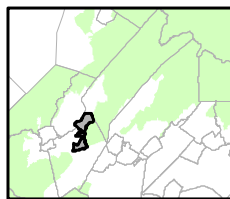


Figure 31: Public Community Water Systems



-  Public Community Water Systems
-  Preservation Area
-  Municipal Boundaries

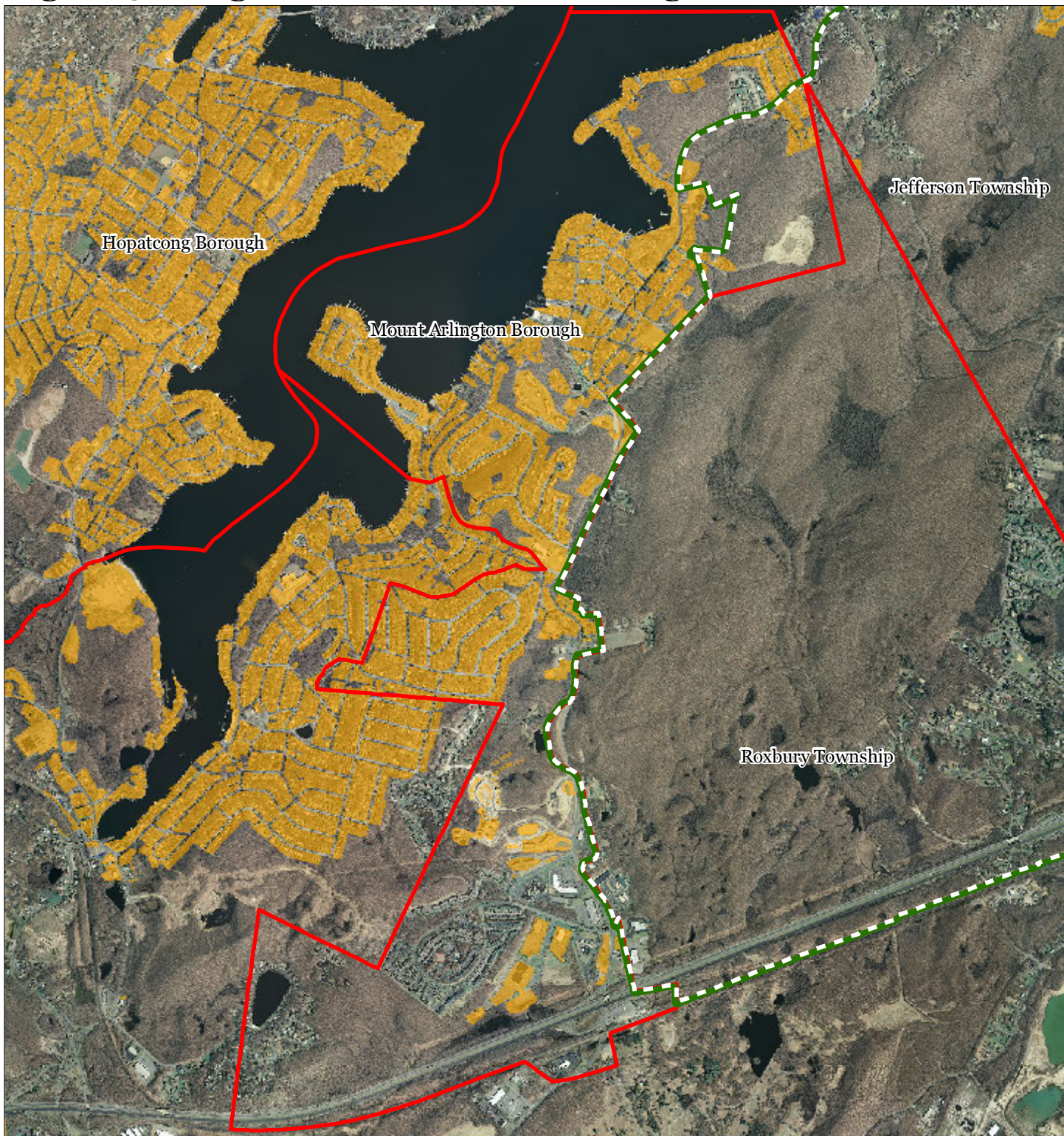
Mount Arlington Borough






1 inch = 0.416 miles



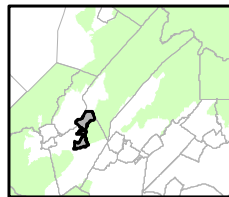
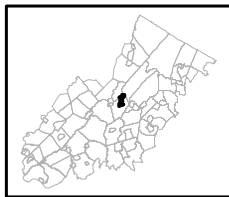
Figure 32: Highlands Domestic Sewerage Facilities



Highlands Domestic Sewerage Facilities

-  Existing Area Served
-  Preservation Area
-  Municipal Boundaries

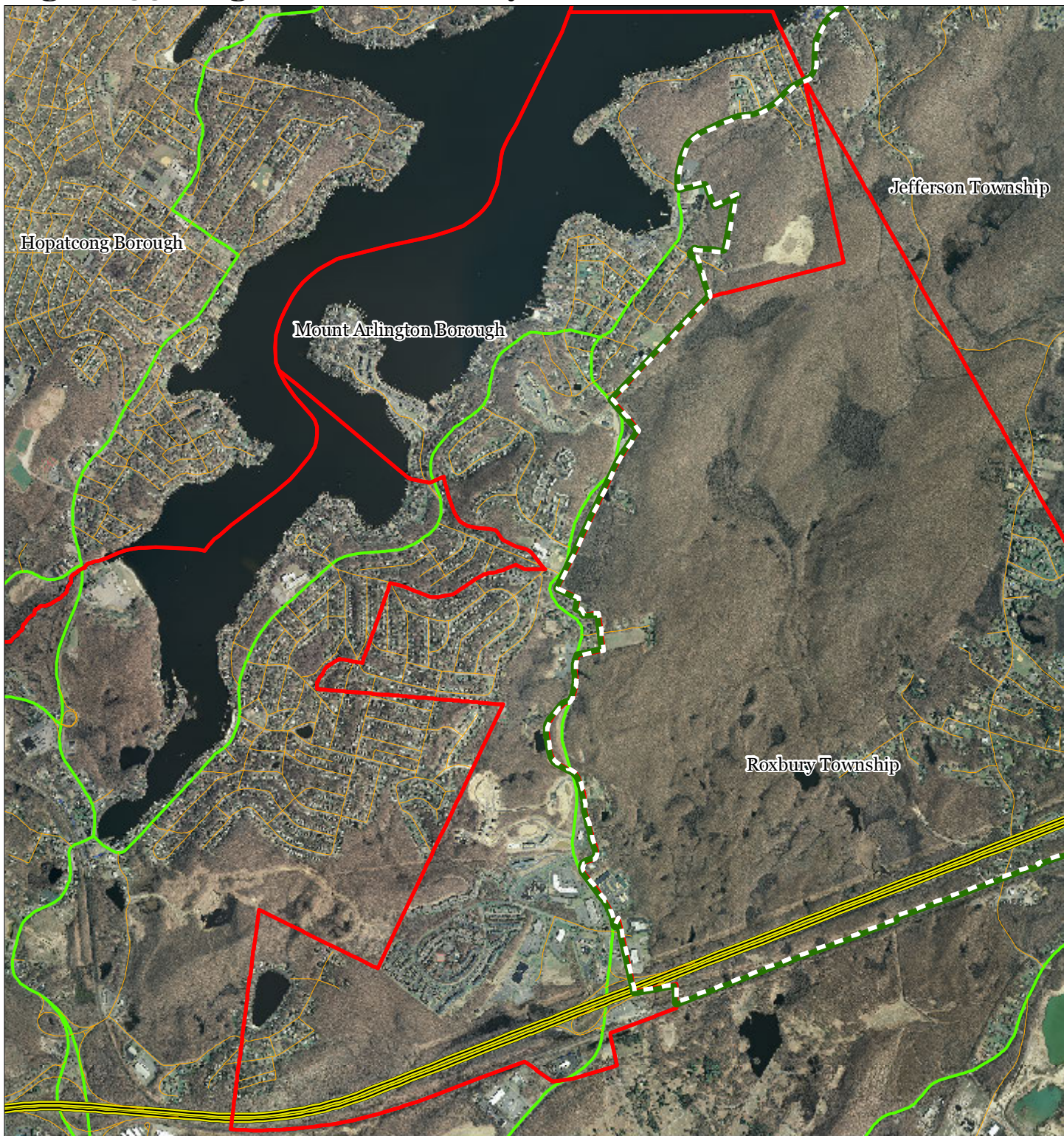
Mount Arlington Borough



1 inch = 0.416 miles



Figure 33: Highlands Roadway Network




Roadway Network


 Interstate Highways

 U.S. Routes

 State Routes

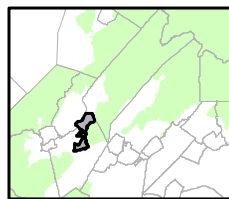
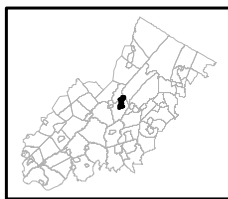
 County Routes

 Local Routes

 Preservation Area

 Municipal Boundaries

Mount Arlington Borough

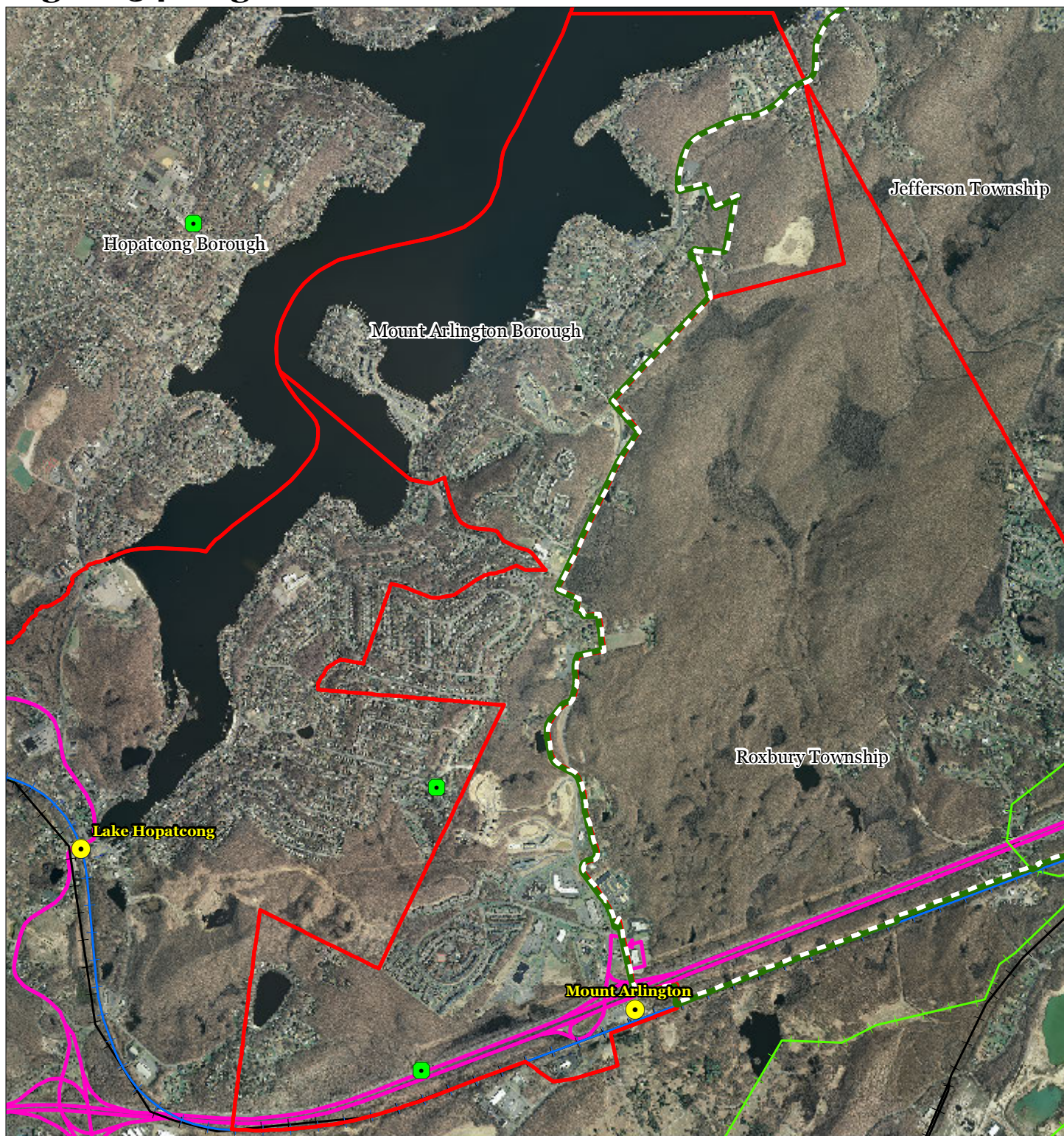


1 inch = 0.416 miles



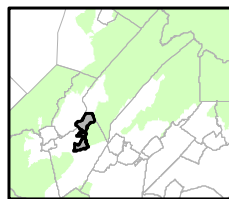
October 2011

Figure 34: Highlands Transit Network



- | | |
|--------------------------------|----------------------|
| Rail Network | Rail Stations |
| Boonton Line | Park and Ride Sites |
| Main Line & Bergen County Line | Private Bus Lines |
| Morris and Essex Line | NJ Transit Bus Lines |
| Raritan Valley Line | Airports |
| Freight Rail Lines | |
| Freight Rail Lines | |
| Abandoned Freight Rail | |

Mount Arlington Borough



1 inch = 0.416 miles

